

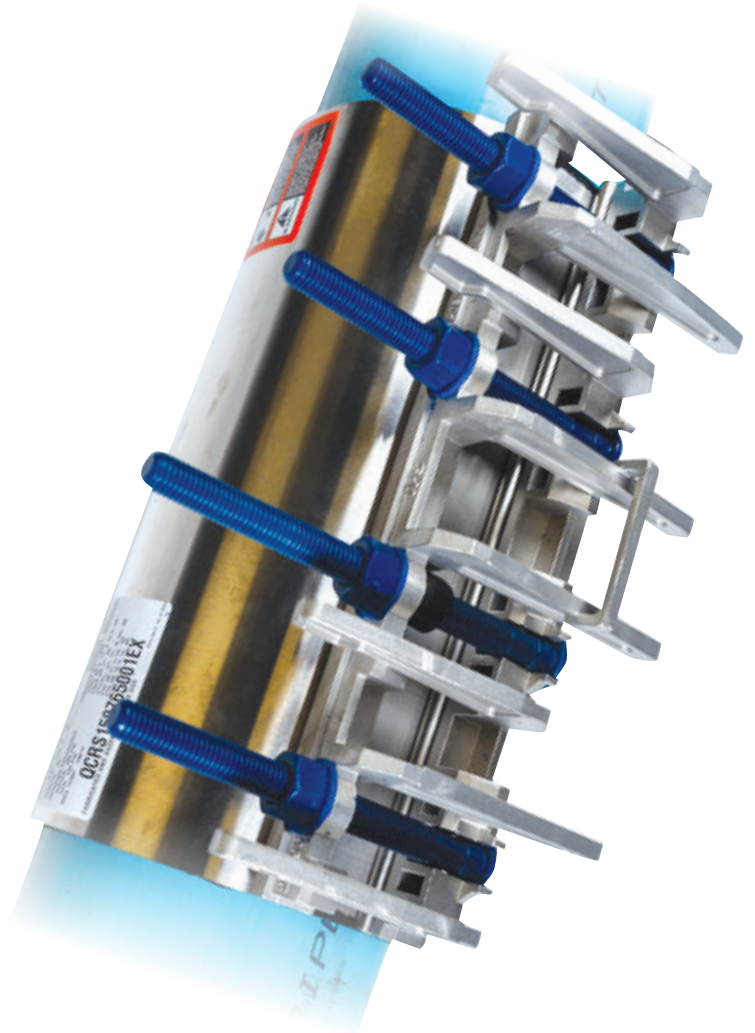
Quick-Cam[®] Repair Clamp

Double-Range Pipe Repair Clamp

Integrated handle for ease of handling
Semi-fixed bolts for trouble-free tightening

Patented gasket design seals under full or
reduced line pressure conditions

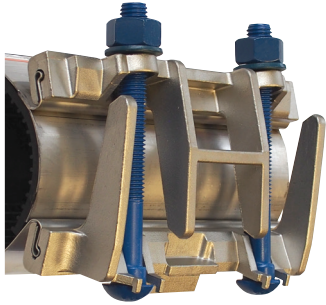
Wide range pipe coverage up to 0.9" repairs nearly
any type of pipe with one clamp



Quick Cam® Extended Range Clamp

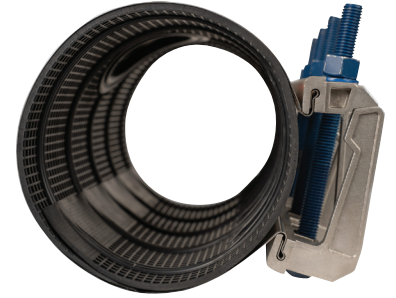
Saves Time, Labor and Inventory Dollars

The Quick-Cam Repair Clamp features an industry leading range of fit 0.9" per clamp, allowing a substantial reduction in inventory taking the guess work out of sizes needed on your shelf. Our patented gasket seal system provides a seal under full or reduced pressure pipelines, and is ideal for repairing breaks, holes and splits in water, wastewater, and sewer lines.



Integrated Handle for Ease of Installation

- » All stainless steel construction or with epoxy coated ductile iron lugs
- » Available with CC or NPT outlets which utilize a T-drill process optimizing the strength of the joint of the outlet to the stainless-steel band
- » 360° seal on all common pipe materials including: Steel, Ductile Iron, Cast Iron, PVC, Asbestos Cement, and HDPE (SDR17 or thicker wall)



Quick-Cam Repair Clamps available in all stainless steel or optional E-Coated ductile iron lug system

Technical Details

Pressure Rating: Up to 200 psi maximum working pressures, up to 300 test pressure

Range: up to 0.9" range of fit per clamp

Temperature Rating: Up to 180°F

Gaskets: NSF-61/372 Approved NBR Rubber

Shell: Heavy Duty Gauge 18-8 Stainless Steel

Alignment Lugs: Heavy Duty ASTM A351 CF8 Grade 304 Cast or Optional Heavy Duty E-Coated ASTM A-536 Ductile Iron

Spanner Plate: Heavy Duty Gauge 18-8 Stainless Steel integral with gasket

Hardware: 304 Stainless Steel nuts, bolts and washers double coated with a Fluoropolymer coating to prevent galling. Optional Carbon Steel nuts and bolts (coated or bare) available for use with ductile iron lug system

Outlets: Outlet clamps with 1/2" - 2" NPT or CC Threads available

Pipe Line Content: Water and Sewerage *Pressure Rating up to 200 psi, hydrostatically tested up to 300 psi. Natural Gas *Pressure Rating up to 125 psi, pressure tested up to 190 psi up to 12" diameters only

Testing: Quick-Cam Repair Clamps are tested for 360° seal per AWWA C-230-16. The test is completed on a simulated 360° beam break test performed at 1.5 times the rated pressure on a test pipe designed with a 1/8" by 3/16" deep hydrostatically pressurized groove

Features:

- » Up to 0.9" range per single panel clamp
- » Up to 1.9" of range for double panel clamps
- » Patented Cam Lug system with integrated handle
- » Slide on- slide off lugs to ease installation with space limitations
- » Patented seal bead geometry with an o-ring seal bead system with deep mat gasket
- » Double o-ring seal under bridge plate provides best in class sealing capabilities
- » Non-Welded Lug to Band Attachment Design Reduces Corrosion Potential
- » Suitable for use on water, sewer, natural gas, and other petroleum based line contents.
- » Meets or exceed AWWA C-230 test requirements

NOTE: Product pressure rating, temperature rating and bolt torque can vary depending on the product diameter, type of connection, and the pipe material being utilized.

** Pressure rating, temperature rating, and bolt torque shown on the product label are the actual ratings of the individual product.*

Quick Cam Extended Range:

	Nominal Dia.	Extended Range (in.)	Widths	Range Repairs Pipe Diameters
Single Panel	3"	3.46-4.26	7-1/2, 10, 12, 15, 20, 24, 30"	CTS, IPS, DIP, PVC Pit Cast, AC 100/150/200
	4"	4.45-5.13	7-1/2, 10, 12, 15, 20, 24, 30, 48"	CTS, IPS, DIP, PVC Pit Cast
	4" o.s.	4.74-5.61	7-1/2, 10, 12, 15, 20, 24, 30, 48"	CTS, IPS, DIP, PVC Pit Cast, AC 100/150/200
	5"	5.50-6.20	7-1/2, 10, 12, 15, 20, 24, 30, 48"	PVC IPS, CTS
	6"	6.55-7.42	7-1/2, 10, 12, 15, 20, 24, 30, 48"	IPS, DIP, PVC Pit Cast, AC 100/150
	6" o.s.	6.84-7.65	7-1/2, 10, 12, 15, 20, 24, 30, 48"	DIP, PVC DIP, Pit Cast, AC 100/150/200
	8"	8.54-9.44	7-1/2, 10, 12, 15, 20, 24, 30, 48"	IPS, DIP, PVC DIP, Pit Cast
	8" o.s.	8.98-9.84	7-1/2, 10, 12, 15, 20, 24, 30, 48"	DIP, PVC DIP, Pit Cast, AC 100/150/200
	10"	10.64-11.46	10, 12, 15, 20, 24, 30, 48"	IPS, DIP, PVC Pit Cast
	10" o.s.	11.34-12.16	10, 12, 15, 20, 24, 30, 48"	Pit Cast, AC 100/150/200
	12"	12.62-13.56	10, 12, 15, 20, 24, 30, 48"	IPS, DIP, PVC, Pit Cast
	12" o.s.	13.65-14.42	10, 12, 15, 20, 24, 30, 48"	IPS, PVC IPS, AC 100/150/200
Double Panel Ranges		14.75-16.24	12, 15, 20, 24, 30, 36, 48"	IPS, PVC IPS, Pit Cast, AC 100
		15.87-17.37	12, 15, 20, 24, 30, 36, 48"	AC 150/200
		16.80-18.30	12, 15, 20, 24, 30, 36, 48"	IPS, DIP, PVC, Pit Cast, AC 100
		17.92-19.42	12, 15, 20, 24, 30, 36, 48"	AC 150/200
		18.88-20.35	12, 15, 20, 24, 30, 36, 48"	IPS, DIP, PVC, Pit Cast, AC 100/150/200
		19.89-21.38	12, 15, 20, 24, 30, 36, 48"	AC 150/200
		20.99-22.49	12, 15, 20, 24, 30, 36, 48"	DIP, PVC DIP, Pit Cast, AC 100/150/200
		21.87-23.36	12, 15, 20, 24, 30, 36, 48"	Pit Cast, AC 100/200
		22.65-24.15	12, 15, 20, 24, 30, 36, 48"	AC 150
		23.27-24.77	12, 15, 20, 24, 30, 36, 48"	IPS, PVC IPS, AC 200
		24.94-26.43	12, 15, 20, 24, 30, 36, 48"	DIP, PVC DIP, Pit Cast
	25.88-27.38	12, 15, 20, 24, 30, 36, 48"	Pit Cast, AC 100	
Triple Panel Ranges		27.45-29.70	12, 15, 20, 24, 30, 36, 48"	AC 150
		29.03-31.28	12, 15, 20, 24, 30, 36, 48"	IPS, PVC IPS, AC 200
		31.79-34.03	12, 15, 20, 24, 30, 36, 48"	DIP, PVC DIP
		35.42-37.66	12, 15, 20, 24, 30, 36, 48"	IPS, PVC IPS
		36.84-39.08	12, 15, 20, 24, 30, 36, 48"	DIP, PVC DIP
Four Panel Range		43.68-46.67	12, 15, 20, 24, 30, 36, 48"	DIP, PVC DIP
		48.98-51.97	12, 15, 20, 24, 30, 36, 48"	DIP, PVC DIP
Five Panel Range		56.99-60.73	12, 15, 20, 24, 30, 36, 48"	DIP, PVC DIP

Note: Contact factory for clamp sizes not shown on this chart

Note: Pressure rating and bolt torque shown on product label are actual rating

Quick Cam® RR (Regular Range) Repair Clamp

Technical Details

Pressure Rating: Up to 150 psi maximum working pressure

Temperature Rating: Up to 180°F

Gasketing: NSF 61 approved SBR Rubber approved for water and sewer service

Spanner Plate: Heavy Gauge 18-8 stainless steel

Lug Material: Type 304, 18-8 stainless steel or E-Coated Ductile Iron

Shell Material: Heavy Gauge Type 304, 18-8 stainless steel

Available Widths: 7.5, 10, 12, 15, 20, and 24" widths

Hardware: 304 Stainless steel Bolts and Washers with heavy double coated or coated carbon steel available upon request

Testing: per AWWA C-230-16 on a full 360-degree beam break

Outlets: Available in ½" to 2" NPT or CC threads

Note: Pressure, temperature and bolt torque can vary depending upon the product diameter, pipe material and type of connection.

Note: Always refer to instructions on product label. Repair Clamps must not be re-used until refurbished with new bolts and gaskets at the factory.

Caution: Quick-Cam RR is not to be used on HDPE Pipe Material.

Nominal Dia.	Regular Range (in)	Widths	Range Repairs Pipe Diameter
2"	2.35-2.65		IPS, IPS, Pit Cast
2-1/2"	2.70-3.00		IPS
3"	3.46-3.70		IPS
4"	4.75-5.14		CTS, IPS, Pit Cast
6"	6.84-7.24		DIP, Pit Cast
6" o.s.	7.05-7.45	7-1/2, 10,12, 15,20,24"	Pit Cast, AC 100/150/200
8"	8.99-9.39		IPS, DIP, Pit Cast
8" o.s.	9.27-9.67		Pit Cast, AC 100/150/200
10"	11.04-11.44		DIP, Pit Cast
12" u.s.	12.62-13.02		IPS
12"	13.10-13.50		DIP, Pit Cast
12" o.s.	14.00-14.40		IPS, AC 100/150/200

The Quick Cam® Emergency Repair Clamp Kit

The Emergency Repair Kit contains all required components and instructions that allow for easily joining and combination of various panels to make pressure rated repairs through 36" diameter. Repairs above 36" can also be made, however, they do not carry a pressure rating and are intended for large temporary repairs or gravity applications.

WARNING This is a non-restraining product. If pipe pullout can occur, proper anchoring of the pipe joint is required. Failure to anchor the pipe could result in the escape of line content, and may cause property damage, serious injury or death

SEWER PIPE RANGES		
4"	4.10	4.90
6"	6.20	7.00
8"	8.35	9.15
10"	10.50	11.30

WARNING This product is intended for use on HDPE SDR-17 or greater wall thicknesses, and shall be used for buried service only. The DPS Triple Tap product line is not approved for above ground applications on HDPE or other plastic pipe



Dresser Coupling & Repair
 1760 Haskell Road
 Olean, NY 14760
 P: 716-372-0160
 F: 716-372-1767
www.dresserutility.com/water



www.dresserutility.com

© 2024 Dresser Water, LLC – All rights reserved. Dresser Utility Solutions reserves the right to make changes in specifications and features shown herein, or discontinue the product described at any time without notice or obligation. Contact your Dresser Utility Solutions representative for the most current information. The Dresser Logo and all Trademarks containing the term "Dresser" are the property of Dresser, LLC, a subsidiary of Baker Hughes and are used under license. Actaris™ is a trademark owned by Itron, Inc. and is used under license.