

# Quick Hot Cam Tapping & Line Stop Saddles

Hot Tapping Saddle 360° Full Seal  
Patented slide-on slide-off lug system  
ideal for tight spaces



## Quick Cam Small Diameter Hot Tap & Line Stop Fitting

Quick-Cam® saddles includes numerous features to assist industrial tapping and line stopping companies when performing industrial and institutional line stops, and exceeds all industry standards, including AWWA C-800.

Available in ¾" through 6" diameter CTS, IPS and DIP 2-1/2" – 6" nominal diameter pipes. The Quick Cam® Hot Tapping Saddle exceeds all industry standards, including AWWA C800 and is built to accommodate copper and steel pipe diameters on all pipe materials.

The Quick-Cam® Line Stop Fitting available in ¾" – 4" includes a completion plug and is built to accommodate copper and steel pipe diameters on all pipe materials.



### Features

- » Slide-on slide-off lug system, for tight spaces
- » Patented integrated handle and thumb-hold for easy handling
- » Spin-Extruded branch outlet to resist the stresses and strains of valve installation and hot tapping

### Specifications

**Diameter Sizes:** ¾" – 4"

**Pressure Rating:** Up to 150 PSI maximum working pressure depending on diameter

**Temperature Rating:** Up to 212°F maximum working temperature

**Gaskets:** NBR temperature rated to 180°F or EPDM temperature rated to 212°F working temperature

**Shell:** Heavy Duty 20 gauge band of Type 304, 18-8 Stainless Steel, fully passivated for corrosion protection

**Spanner:** Heavy Duty 16 or 18 gauge Type 304, 18-8 Stainless Steel

**Alignment Lugs:** Heavy Duty Cast Type 304, 18-8 Stainless Steel with an easy "P" slotted slide-on-slide-off

**Branch Connections:** Type 304 18-8 Stainless Steel threaded outlets available in ¾" to 4" diameter (NPT Thread Pitch)

**Completion Plug:** Brass, Stainless Steel or Carbon Steel with "O" Ring Seal where needed

**Optional Completion Cap:** Ductile iron material unless otherwise specified

**Bolts/Nuts/Washers:** Type 304 Stainless Rolled, coated with Fluoropolymer coating to prevent galling

**Body:** 100% insulated from Ductile Iron or Carbon Steel Pipe Materials  
Patent Pending Cam Lug Fingers for Extended Range

*Note: Product Pressure, Temperature and Bolt Torque can vary depending on Product Diameter, Type of Connection, Line Content and Pipe Material Being Utilized. (Refer to Product Label for Details). The Pressure Rating, Temperature and Bolt Torque shown on product label are the actual ratings of the particular product.*



Integrated Handle for Ease of Installation

## Quick Cam Hot Tap Saddles

Nominal Size	Covers	Outside Diameter	Outlet Size (NPT)
3/4"	CTS	0.88"	3/4"
	IPS	1.05"	
1"	CTS	1.13"	3/4", 1"
	IPS	1.32"	
1-1/4"	CTS	1.38"	3/4", 1", 1-1/4"
	IPS	1.66"	
1-1/2"	CTS	1.63"	3/4" to 1-1/2"
	IPS	1.90"	
2"	CTS	2.13"	3/4" to 2"
	IPS	2.38"	
2-1/2"	CTS	2.63"	3/4" to 2-1/2"
	IPS	2.88"	
3"	CTS	3.13"	3/4" to 3"
	IPS	3.50"	
4"	CTS	4.13"	3/4" to 4"
	IPS	4.50"	
6"	CTS	6.13"	3/4" to 6"



## Quick Cam Line Stop Saddles

Nominal Size	Covers	Outside Diameter	Outlet Size
3/4"	CTS	0.88"	3/4"
	IPS	1.05"	
1"	CTS	1.13"	3/4", 1"
	IPS	1.32"	
1-1/4"	CTS	1.38"	1-1/4"
	IPS	1.66"	
1-1/2"	CTS	1.63"	1-1/4", 1-1/2"
	IPS	1.90"	
2"	CTS	2.13"	1-1/2", 2"
	IPS	2.38"	
2-1/2"	CTS	2.63"	1-1/2", 2", 2-1/2"
	IPS	2.88"	
	Ranged Fitting	2.50" - 2.70"	
3"	CTS	3.13"	1-1/2", 3"
	IPS	3.50"	
	Ranged Fitting	3.75-4.00"	
4"	CTS	4.13"	3"
	IPS	4.50"	
	Ranged Fitting	4.69-4.91"	
	Ranged Fitting	4.74-5.13"	

## Applicable Standards:

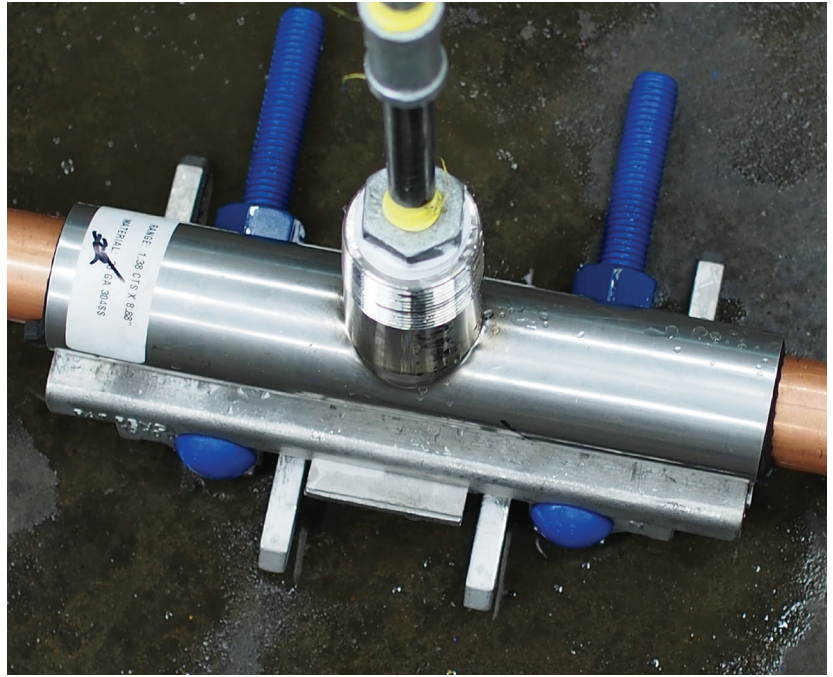
### ANSI/AWWA C800-12

**ASTM A380-06** Standard Practice for Cleaning, Descaling and Passivation of Stainless Steel Parts, Equipment and Systems

**ASTM A967-05** Standard Specifications for Chemical Passivation Treatments for Stainless Steel Parts NSF/ANSI Standard 61 – Drinking Water Systems Components

**ASTM D2000-12** - Standard Classification System for Rubber Products

**CAUTION REUSE:** Due to spanner forming (creasing), bolt stress and gasket permanent set deformations incurred in installation, fittings must not be reused until refurbished with new bolts, spanners and gaskets at DPS. Always insure the main pipe has the structural integrity to resist the mechanical load of the fitting or the product may not seal properly.



*Stop-Fittings are typically sized for commonly used North American pipe diameters, and are available in various outlet sizes manufactured to various industry standard specifications. Fabricated stainless steel stop-fittings are available in various configurations not depicted in this brochure (please call factory for assistance with special applications).*

**WARNING** This product is not intended for use on natural gas piping or any other type of gas piping. To do so could result in escaping gas that could ignite and cause property damage, serious injury or death.

**WARNING** This is a non-restraining product. If pipe pullout can occur, proper anchoring of the pipe joint is required. Failure to anchor the pipe could result in the escape of line content, and may cause property damage, serious injury or death.

**WARNING** This product is intended for use on HDPE SDR-17 or greater wall thicknesses, and shall be used for buried service only. The DPS Triple Tap product line is not approved for above ground applications on HDPE or other plastic pipe



**Dresser Pipeline Solutions**  
1760 Haskell Road  
Olean, NY 14760  
P: 716-372-0160  
E: [water@dresserutility.com](mailto:water@dresserutility.com)  
[www.dresserutility.com/water](http://www.dresserutility.com/water)

© 2024 Dresser Water, LLC – All rights reserved. Dresser Utility Solutions reserves the right to make changes in specifications and features shown herein, or discontinue the product described at any time without notice or obligation. Contact your Dresser Utility Solutions representative for the most current information. The Dresser Logo and all Trademarks containing the term “Dresser” are the property of Dresser, LLC, a subsidiary of Baker Hughes and are used under license. Actaris™ is a trademark owned by Itron, Inc. and is used under license.



[www.dresserutility.com](http://www.dresserutility.com)