



# Pipe Joining & Pipe Repair Products



**Up To  
275 PSI  
Pressure**



**High  
Strength  
Materials**



**Reduce  
Time  
On Job**

## TPS TX3® Wide Range Transition Coupling

- » 2" - 16" Wide Range Diameters available in Standard or Long Body Versions
- » Minimum Coverage of 3 Pipe Classes
- » Standard Imperial Sized Nuts and Bolts
- » 3 Step Fusion Bonded Epoxy Coating
- » Up to 275 psi Working Pressure
- » Temperatures up to 125°F



## TPS Quick-Cam® Wide Range Repair Clamp

- » 2" - 54" sizes Stainless Steel Bands
- » Large diameter Emergency Repair Kits Available
- » Lugs of Stainless Steel or Ductile Iron
- » CC and NPT Outlets Available
- » Up to 200 psi Working Pressure
- » Temperatures up to 180°F



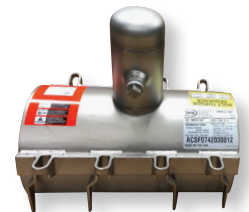
## TPS Ultra-Sleeve® Leak Encapsulation Repair Sleeve

- » 2"-12" covers IPS, CIP, DIP, AC, PVC, HDPE with one sleeve per nominal size
- » 14, 16, 20, 24" Fabricated Carbon Steel with Stainless Steel hardware
- » Easy to reach starter bolts with no need to shut down the water main for quick installation
- » Up to 200 psi Working Pressure
- » Temperatures up to 80°F



## TPS Abandoned Corp Stop Fitting

- » 4" to 48" diameters available in 9" and 15" wide version
- » Designed to encapsulate common valve sizes
- » Heavy Stainless Steel Shell
- » 250 psi Working Pressure
- » Temperatures up to 180°F



## Compression Fittings and Patch Clamps

- » Fitting: 1/2" - 2" sizes (IPS and CTS) Compression by Compression
- » Compression by Male Adapter and 90° Ells
- » Temperatures up to 212°F



- » Handiband® Clamp: 1/2" - 8"
- » Stainless Band - Ductile Lug in 3, 6, 12" wide
- » 150 psi Working Pressure



# Pipe Tapping & Line Stop Fittings

## TPS Triple Tap® Tapping Sleeves

- » 4" – 48" Nominal Size Range
- » Stainless Steel Tapping Sleeve with branch sizes up to 24" — Carbon steel flange available upon request
- » MJ Tapping Sleeve Branch Sizes up to 16"
- » 360° Pipe sealing surface to protect against beam break
- » Up to 250 psi Working Pressure
- » Temperatures up to 180°F



## TPS Triple Tap® Line Stop Fittings

- » 4" – 24" Nominal Size Range
- » Multiple Configurations Including Push or Threaded Completion Plug
- » Type-H flange available upon request
- » Stainless Steel Line Stop with branch sizes up to 16" with optional carbon steel flange
- » Call factory for larger branch connections
- » Up to 250 psi Working Pressure
- » Temperatures up to 180°F



## TPS Quick-Cam® Hot Tapping Saddles

- » ¾ – 4" Nominal Size in CTS or IPS
- » Stainless steel saddle construction
- » Call factory for special sizes
- » Up to 150 psi Max Working Pressure
- » NBR Gasket Temperatures up to 180°F
- » EPDM Gasket Temperatures up to 220°F



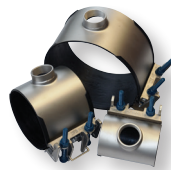
## TPS Quick-CamFittings® Line Stop

- » 3/4" - 4" in CTS or IPS Sizes
- » Stainless Steel construction with lead free brass plug
- » Call factory for special sizes
- » Up to 150 psi Max Working Pressure
- » NBR Gasket Temperatures up to 180°F
- » EPDM Gasket Temperatures up to 220°F



## TPS T3® Service Saddle

- » 4" – 48" Nominal Size Range
- » Stainless steel saddle construction
- » Isolation Boot to prevent Bi-Metallic Corrosion
- » One saddle covers DIP, CIP, PVC, HDPE, AC Pipe per nominal size
- » 4" - 16" Nominal Up to 250 psi
- » 18" - 24" Nominal Up to 200 psi
- » 42" - 48" Nominal Up to 125 psi
- » Temperatures up to 180°F



## Other Dresser Piping Products

- » Style 38 Couplings 2-120"
- » Dismantling joints 2-72"
- » Flange Coupling Adapters 2-120"
- » American Iron & Steel Compliance Products (AIS) available



**Dresser Pipeline Solutions**  
1760 Haskell Road  
Olean, NY 14760  
P: 716-372-0160  
F: 716-372-1767  
[www.dresserutility.com/water](http://www.dresserutility.com/water)