

Bellofram

CORPORATION

NEWELL, WV U.S.A. 26050
(304) 387-1200

These regulators are designed for air and gas service. Maximum pressures are described on the individual labels. Operating temperatures are 0 to 160°F.

Installation:

Install the regulator as close to the instrument or tool it is to service. The words "IN" and "OUT" are cast in the body to indicate the direction of flow. (NOTE: If a lubricator is to be used in the system, install it downstream of the regulator.)

Operation:

Types 40 & 50: Before turning on the supply air, screw out the adjusting screw until there is no compression on the regulating spring. Turn on the air supply and turn the adjusting screw until the desired secondary pressure is reached.

Types 60 & 65: These regulators are preset at the factory and no further adjustment can be made.

Maintenance:

Periodic cleaning of the filter is recommended on Type 50 and Type 60 regulators.

A. To remove condensate, slowly open drain valve and bleed accumulated liquid.

B. To clean filter element:

- 1) Shut off air supply.
- 2) Drain condensate.
- 3) Remove large bolt from bottom of unit.
- 4) Remove bowl, filter and gasket.
- 5) Clean all parts thoroughly and reassemble in reverse order.

C. To install replacement parts:

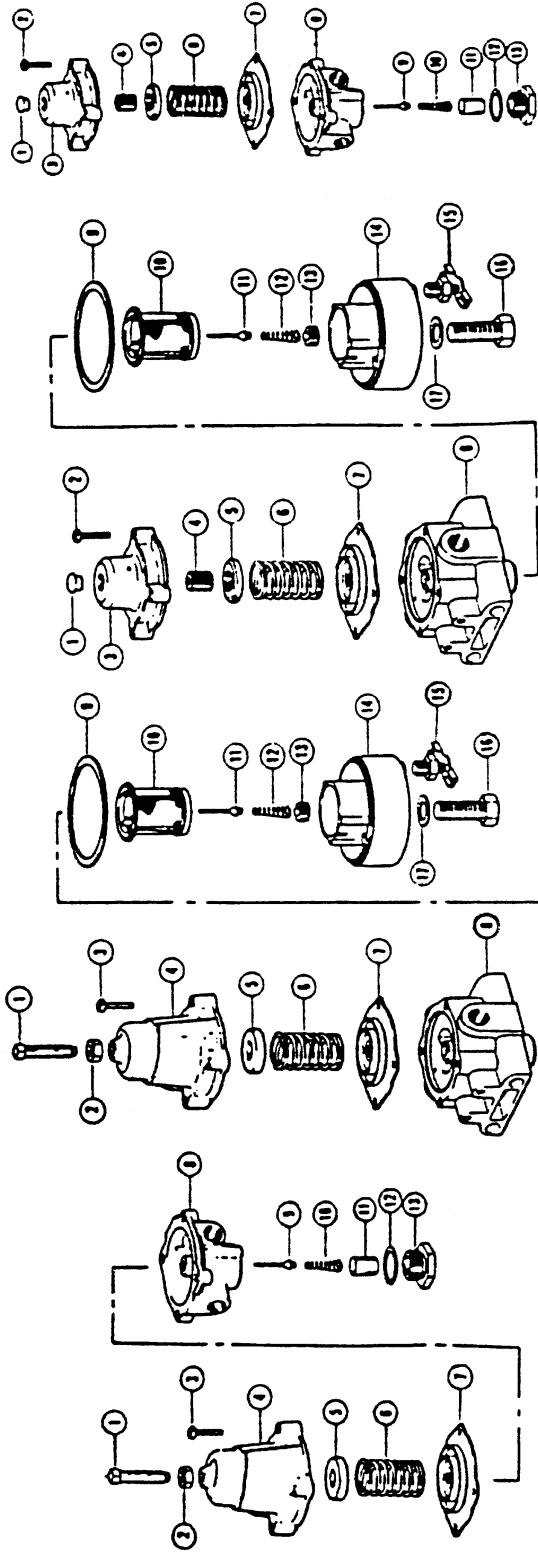
- 1) Order repair kit for Type 40, 50, 60, or 65 regulator. See exploded views on back of this sheet.
- 2) Shut off air supply. on Types 40 & 50, screw out adjusting screw.
- 3) Remove 4 screws and bottom plug and remove all parts.
- 4) Replace parts that show excessive wear with items in kit.
- 5) Clean all parts and replace in reverse order.

Direct any specific questions to the nearest Bellofram Sales Engineer or to the factory.

NOTE: On Type 50 and Type 60 the pintle spring screw, Item No. 13, should be installed finger tight with a screw driver. Hex head screw, Item No. 16, should be torqued to 22-25 ft./lbs.

Warranties of Sale, disclaimer thereof and limitations of liability are covered exclusively by Bellofram's printed warranty statement for the regulators. These instructions do not expand, reduce, modify or alter Bellofram's warranty statement and no warranty or remedy in favor of a customer or any other person arises out of these instructions.

PRESSURE REGULATORS



TYPE 40

Adjustable-without Dripwell

1. Sq. Hd. Adjusting screw
2. Nut, Locking
3. Build Screw
4. Bonnet
5. Guide, Spring
6. Spring, Range
7. *Diaphragm Assembly
8. Body
9. *Pintle
10. *Spring, Pintle
11. *Screen
12. *Gasket
13. *Plug, Bottom

TYPE 50

Adjustable-with Dripwell

1. Sq. Hd. Adjusting Screw
2. Nut, Locking
3. Build Screw
4. Bonnet
5. Guide, Spring
6. Spring, Range
7. *Diaphragm Assembly
8. Body
9. *Gasket, Dripwell
10. *Filter
11. *Pintle, Valve
12. *Spring, Pintle
13. Screw, Pintle Spring
14. Housing, Dripwell
15. Petcock
16. Screw, Hex. Head
17. *Washer

TYPE 60

Adjustable-with Dripwell

1. Plug, Cover
2. Build Screw
3. Bonnet
4. Screw, Adjusting
5. Guide, Spring
6. Spring, Range
7. *Diaphragm Assembly
8. Body
9. *Gasket, Dripwell
10. *Filter
11. *Pintle, Valve
12. *Spring, Pintle
13. Screw, Pintle Spring
14. Housing, Dripwell
15. Petcock
16. Screw, Hex. Head
17. *Washer

TYPE 65

Adjustable-without Dripwell

1. Plug, Cover
2. Build Screw
3. Bonnet
4. Screw, Adjusting
5. Guide, Spring
6. Spring, Range
7. *Diaphragm Assembly
8. Body
9. *Pintle, Valve
10. *Spring, Pintle
11. *Screen
12. *Gasket, Plug
13. Plug, Bottom

All items marked with an asterisk (*) will be included in the repair kit. Other parts may be ordered separately by specifying the item number, part name and the part number of the regulator for which the parts are intended.

IMPORTANT: Orders for these parts cannot be properly filled unless you specify the regulator part number and pressure range.