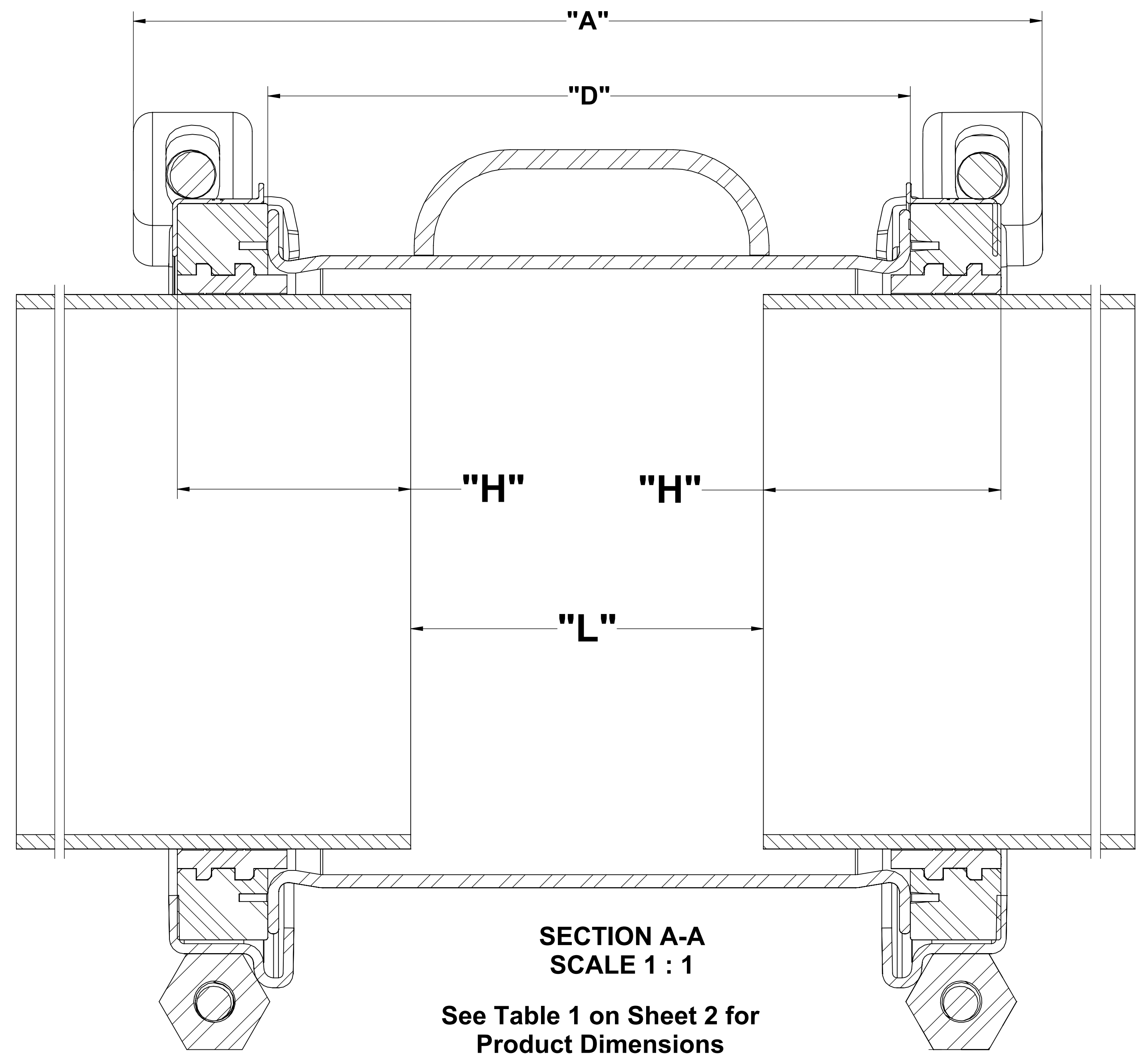
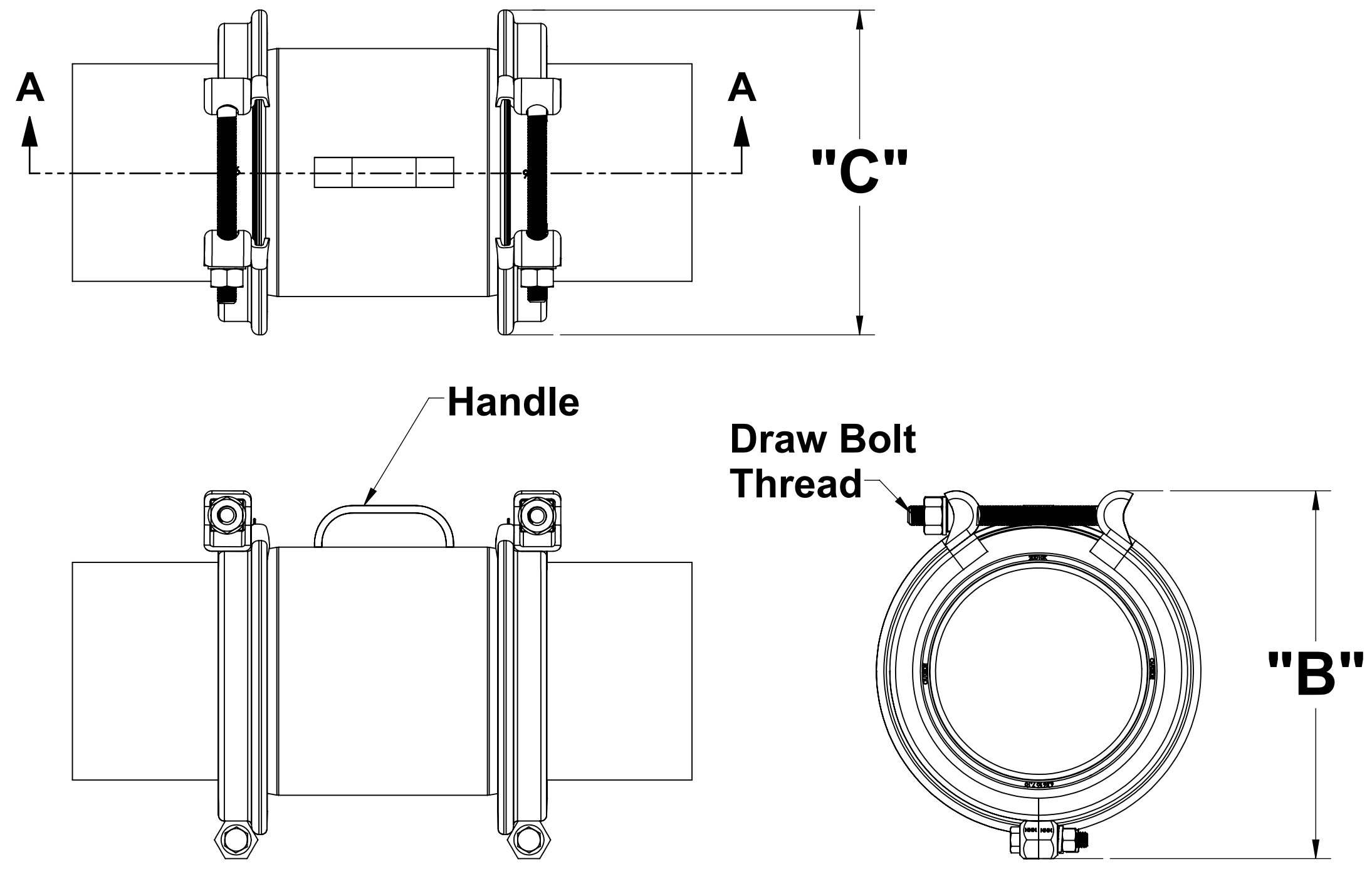


REVISIONS				
ZONE	REV.	DESCRIPTION	DATE	APPROVED
	A	Initial Drawing Release	02/07/2018	RCM
		Drawing Released	09/24/2018	RCM
	B	Updated Coupling Weights	01/11/2019	RCM
	C	Updated Bolt Torques	04/09/2019	RCM
	D	Added stab depth for DR14 and thinner non-metallic	01/14/2020	RCM
	E	Added Part Numbers and Long Body Options	4/8/2020	RJF
	F	Updated Gasket Revision and Bolt Torques	1/11/2021	



**Notes:**

1. Handle omitted on 2 inch and 3 inch TX3 Coupling
2. The TX3 Coupling meets or exceeds all requirements of standard AWWA C-219
3. Gaskets - NBR - NSF-61 and NSF-372 Approved by Underwriters Laboratories
4. Middle Ring - ASTM A53 Grade A or equivalent
5. End Rings - ASTM A283 Grade D Carbon Steel or equivalent
6. Bolts and Nuts - 18-8 Type 304 Stainless Steel.
7. Spanner - 18-8 Type 304 Stainless Steel.
8. Coatings - NSF-61 Approved Fusion Bonded Epoxy over Electrocoat and chemically applied Conversion coatings.
9. Working Temperature Range- Up to 125 Deg F at torques shown in table. Contact factory for other temperature requirements.
10. Minimum Insertion Depth - See Table on Sheet 2. Note special requirements for use on PE Pipe. Please see installation instructions.
11. Angular deflection - Up to 4 degrees per coupling end.

Last Save Date: Wednesday, June 9, 2021 2:12:35 PM

Filename: Dwg 20096 Rev F TX3 Coupling Customer Submittal Drawing		CONTRACT NO.		TOTAL PIPING SOLUTIONS INC. A	
UNLESS OTHERWISE SPECIFIED DIMENSIONS ARE IN INCHES.		APPROVALS		P.O. BOX 525, OLEAN, N.Y. 14760	
TOLERANCES ARE:		DATE		TITLE	
FRACTIONS: ±1/16" ANGLE: ±1°		02/07/2018		TX3 Coupling Customer Submittal Drawing	
DECIMALS: .XX ±.01 .XXX ±.005		DRAWN: RCM		CHECKED:	
DO NOT SCALE DRAWING		APPD:		CUST:	
THIRD ANGLE PROJECTION		CUST:		SCALE 1:4	
		DWG NO. 20096		REV F	
		SHEET 1 OF 2			

THE INFORMATION DISCLOSED IN THIS DOCUMENT, INCLUDING ALL DESIGNS AND RELATED MATERIALS, IS THE VALUABLE PROPERTY OF TOTAL PIPING SOLUTION, INC. (TPS). TPS RESERVES ALL PATENT, COPYRIGHT, AND PROPRIETARY RIGHTS TO THE INFORMATION SET FORTH IN THIS DOCUMENT INCLUDING ALL DESIGN, MANUFACTURING, REPRODUCTION, USE AND SALES RIGHTS THERETO, EXCEPT TO THE EXTENT SAID RIGHTS ARE EXPRESSLY GRANTED TO OTHERS. REPRODUCTION, TRANSMISSION, OR DISCLOSURE, WITHOUT TPS'S EXPRESS PRIOR WRITTEN CONSENT, OF THIS DOCUMENT OR THE INFORMATION SET FORTH IN THIS DOCUMENT TO ANY THIRD PARTY IS PROHIBITED.

D  
C  
B  
A

D  
C  
B  
A

Table 1: TX3 Coupling Data

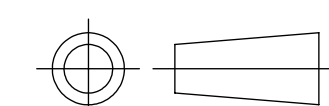
Size	Part #	Overall Range Pipe Dia's.	Diameter Range With Inner Gasket Inserted	Diameter Range With Inner Gasket Removed	"A"	"B"	"C"	"D"	"H" Min Stab Depth Rigid Pipe	"H" Min Stab Depth PE Pipe (See Note 1)	"L" Maximum Pipe Gap Rigid Pipe (See Note 2)	"L" Maximum Pipe Gap PE Pipe (See Notes 1 and 2)	Draw Bolt Thread	Nut Wrench Size	Maximum Allowable Working Pressure (MAWP)	Coupling Weight
2"	TX303030000000	2.10-3.03	2.10-2.60	2.56-3.03	7.55	6.91	6.67	4.00	2.00	2.50	2.25	1.25	1/2-13 UNC	3/4"	275 PSI	8 lbs
3"	TX304200000000	3.10-4.20	3.10-3.56	3.70-4.20	9.55	8.26	7.18	6.00	2.00	3.00	4.25	2.25	1/2-13 UNC	3/4"	275 PSI	12 lbs
4"	TX305610000000	4.45-5.61	4.45-5.06	4.94-5.61	9.81	9.98	8.74	6.20	2.00	3.00	4.60	2.60	1/2-13 UNC	3/4"	275 PSI	18 lbs
6"	TX307650000000	6.56-7.65	6.56-7.05	7.04-7.65	12.00	12.22	10.79	8.38	2.00	3.00	6.70	4.70	5/8-11 UNC	1-1/16"	275 PSI	22 lbs
8"	TX309840000000	8.54-9.84	8.54-9.15	9.15-9.84	12.00	14.36	13.10	8.38	2.00	3.00	6.70	4.70	5/8-11 UNC	1-1/16"	275 PSI	26 lbs
10" US	TX311840000000	10.64-11.84	10.64-11.18	11.18-11.84	12.00	16.68	15.39	8.25	2.00	3.00	6.70	4.70	5/8-11 UNC	1-1/16"	260 PSI	43 lbs
10" OS	TX312260000000	11.01-12.26	11.01-11.63	11.59-12.26	12.00	17.05	16.22	8.25	2.00	3.00	6.70	4.70	5/8-11 UNC	1-1/16"	260 PSI	44 lbs
12" US	TX313660000000	12.62-13.66	12.62-13.06	13.10-13.66	12.00	18.51	17.65	8.25	2.00	3.00	6.70	4.70	5/8-11 UNC	1-1/16"	260 PSI	47 lbs
12" OS	TX314450000000	13.14-14.45	13.14-13.78	13.74-14.45	12.00	19.56	18.38	8.25	2.00	3.00	6.70	4.70	5/8-11 UNC	1-1/16"	260 PSI	51 lbs
<b>LONG BODY</b>																
2"	TX3030300000LB	2.10-3.03	2.10-2.60	2.56-3.03	11.3	6.91	6.67	7.75	2.00	2.50	6	5	1/2-13 UNC	3/4"	275 PSI	9 lbs
3"	TX3042000000LB	3.10-4.20	3.10-3.56	3.70-4.20	14.55	8.26	7.18	11	2.00	3.00	9.25	7.25	1/2-13 UNC	3/4"	275 PSI	15 lbs
4"	TX3056100000LB	4.45-5.61	4.45-5.06	4.94-5.61	14.67	9.98	8.74	11	2.00	3.00	9.4	7.4	1/2-13 UNC	3/4"	275 PSI	24 lbs
6"	TX3076500000LB	6.56-7.65	6.56-7.05	7.04-7.65	19.12	12.22	10.79	15.5	2.00	3.00	13.82	11.82	5/8-11 UNC	1-1/16"	275 PSI	32 lbs
8"	TX3098400000LB	8.54-9.84	8.54-9.15	9.15-9.84	19.12	14.36	13.10	15.5	2.00	3.00	13.82	11.82	5/8-11 UNC	1-1/16"	275 PSI	39 lbs
10" US	TX3118400000LB	10.64-11.84	10.64-11.18	11.18-11.84	19.75	16.68	15.39	16	2.00	3.00	14.45	12.45	5/8-11 UNC	1-1/16"	260 PSI	60 lbs
10" OS	TX3122600000LB	11.01-12.26	11.01-11.63	11.59-12.26	19.75	17.05	16.22	16	2.00	3.00	14.45	12.45	5/8-11 UNC	1-1/16"	260 PSI	62 lbs
12" US	TX3136600000LB	12.62-13.66	12.62-13.06	13.10-13.66	19.75	18.51	17.65	16	2.00	3.00	14.45	12.45	5/8-11 UNC	1-1/16"	260 PSI	66 lbs
12" OS	TX3144500000LB	13.14-14.45	13.14-13.78	13.74-14.45	19.75	19.56	18.38	16	2.00	3.00	14.45	12.45	5/8-11 UNC	1-1/16"	260 PSI	71lbs

Note 1: The TX3 Coupling shall not be used on Polyethylene Pipe of wall thickness less that SDR-17.

Note 2: For Non-Metallic pipe of wall thickness DR-14 and thinner, stab depth must be a minimum of 4 inches from outer edge of gasket.

Note 3: See Sheet 3 for Bolt Torque specifications.

THE INFORMATION DISCLOSED IN THIS DOCUMENT, INCLUDING ALL DESIGNS AND RELATED MATERIALS, IS THE VALUABLE PROPERTY OF TOTAL PIPING SOLUTION, INC. (TPS). TPS RESERVES ALL PATENT, COPYRIGHT, AND PROPRIETARY RIGHTS TO THE INFORMATION SET FORTH IN THIS DOCUMENT INCLUDING ALL DESIGN, MANUFACTURING, REPRODUCTION, USE AND SALES RIGHTS THERETO, EXCEPT TO THE EXTENT SAID RIGHTS ARE EXPRESSLY GRANTED TO OTHERS. REPRODUCTION, TRANSMISSION, OR DISCLOSURE, WITHOUT TPS'S EXPRESS PRIOR WRITTEN CONSENT, OF THIS DOCUMENT OR THE INFORMATION SET FORTH IN THIS DOCUMENT TO ANY THIRD PARTY IS PROHIBITED.

UNLESS OTHERWISE SPECIFIED DIMENSIONS ARE IN INCHES. TOLERANCES ARE: FRACTIONS: ±1/16" ANGLE: ±1° DECIMALS: .XX ±.01 .XXX ±.005		CONTRACT NO.		TOTAL PIPING SOLUTIONS INC. P.O. BOX 525, OLEAN, N.Y. 14760	
DO NOT SCALE DRAWING		APPROVALS	DATE	TITLE	
THIRD ANGLE PROJECTION		RCM	02/07/2018	TX3 Coupling Customer Submittal Drawing	
		APPD:	CUST:	SIZE D	CAGE CODE
				DWG NO 20096	REV F
		SCALE 1:4	WEIGHT	SHEET 2 OF 2	