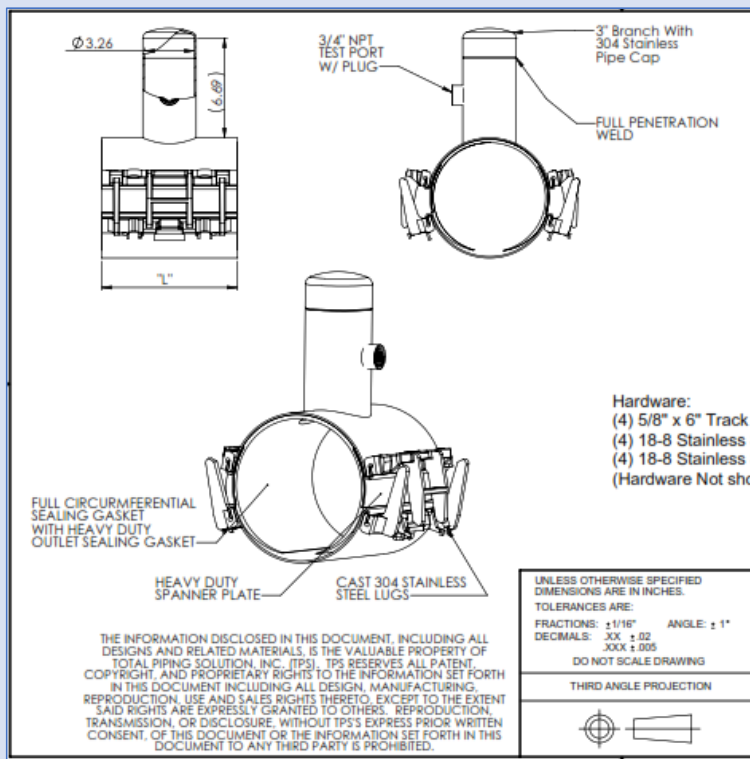


ABANDONED CORP STOP - "SPECIAL WIDTH"

(Non-Standard Product Width)

SIZE	RANGE	"L"	BRANCH SIZE	PART NUMBER	
4"	4.45 - 5.13"	8.875"	3"	ACSF0513030012-09	
	4.74 - 5.36"	8.875"	3"	ACSF0536030012-09	
	4.45 - 5.13"	8.875"	4"	ACSF0513040012-09	
4"	4.74 - 5.36"	8.875"	4"	ACSF0536040012-09	
	6"	6.55 - 7.42"	8.875"	3"	ACSF0742030012-09
		6.84 - 7.65"	8.875"	3"	ACSF0765030012-09
6.55 - 7.42"		8.875"	4"	ACSF0742040012-09	
6"	6.84 - 7.65"	8.875"	4"	ACSF0765040012-09	
	8"	8.54 - 9.44"	8.875"	3"	ACSF0944030012-09
		8.98 - 9.84"	8.875"	3"	ACSF0984030012-09
8.54 - 9.44"		8.875"	4"	ACSF0944040012-09	
8"	8.98 - 9.84"	8.875"	4"	ACSF0984040012-09	
	10"	10.64 - 11.46"	8.875"	3"	ACSF1146030012-09
		11.34 - 12.16"	8.875"	3"	ACSF1216030012-09
10.64 - 11.46"		8.875"	4"	ACSF1146040012-09	
10"	11.34 - 12.16"	8.875"	4"	ACSF1216040012-09	
	12"	12.62 - 13.56"	8.875"	3"	ACSF1356030012-09
		13.65 - 14.42"	8.875"	3"	ACSF1442030012-09
12.62 - 13.56"		8.875"	4"	ACSF1356040012-09	
12"	13.65 - 14.42"	8.875"	4"	ACSF1442040012-09	



SIZE	RANGE	"L"
4"	4.45-5.13	8.875
4" O.S.	4.74-5.36	8.875
6"	6.55-7.42	8.875
6" O.S.	6.84-7.65	8.875
8"	8.54-9.44	8.875
8" O.S.	8.98-9.84	8.875
10"	10.64-11.46	8.875
10" O.S.	11.34-12.16	8.875
12"	12.62-13.56	8.875
12" O.S.	13.65-14.42	8.875

Hardware:
 (4) 5/8" x 6" Track Head Bolts 18-8 Stainless Steel Fluoropolymer Coated
 (4) 18-8 Stainless Steel Heavy Duty Nuts Fluoropolymer Coated
 (4) 18-8 Stainless Steel Heavy Duty Washers Fluoropolymer Coated
 (Hardware Not shown)

THE INFORMATION DISCLOSED IN THIS DOCUMENT, INCLUDING ALL DESIGNS AND RELATED MATERIALS, IS THE VALUABLE PROPERTY OF TOTAL PIPING SOLUTION, INC. (TPS). TPS RESERVES ALL PATENT, COPYRIGHT, AND PROPRIETARY RIGHTS TO THE INFORMATION SET FORTH IN THIS DOCUMENT INCLUDING ALL DESIGN, MANUFACTURING, REPRODUCTION, USE AND SALES RIGHTS THERE TO, EXCEPT TO THE EXTENT SAID RIGHTS ARE EXPRESSLY GRANTED TO OTHERS. REPRODUCTION, TRANSMISSION, OR DISCLOSURE, WITHOUT TPS'S EXPRESS PRIOR WRITTEN CONSENT, OF THIS DOCUMENT OR THE INFORMATION SET FORTH IN THIS DOCUMENT TO ANY THIRD PARTY IS PROHIBITED.

UNLESS OTHERWISE SPECIFIED DIMENSIONS ARE IN INCHES. TOLERANCES ARE: FRACTIONS: ±1/16" ANGLE: ±1° DECIMALS: .XX ±.02 DO NOT SCALE DRAWING	CONTRACT NO.		TOTAL PIPING SOLUTIONS INC. P.O. BOX 525, OLEAN, N.Y. 14760	
	APPROVALS	DATE	TITLE	
THIRD ANGLE PROJECTION	RJF	07/21/21	Abandoned Corp Service Triple Tap - Reduced Length	
	CUST:		SIZE	REV
			B	C
			CAGE CODE	DWG NO
				50233
			SCALE	1:10
			WEIGHT	SHEET 1 OF 1