

**Accessories:**

Part Number	Lead - Connection type	For use with	Impulse Connection	
			+	-
W86413-000	Binder socket & 3m lead assembly	80-0002-020	White	Brown
W86423-000	Binder plug & 3m lead assembly	80-0002-030	White	Brown
WO6433-000	Fischer plug & 3m lead assembly	80-0002-050	Yellow	Green

**Pulse transmitter and lead combinations:**

Part Number	Lead	Pulser	Impulse Connection	
			+	-
R01223-000	W86413-000	80-0002-020	White	Brown
R01233-000	W86423-000	80-0002-030	White	Brown



## REED LF Pulse Transmitter Series 80-0002-XXX



**Natural Gas Solutions (UK) Limited**

201 Mere Grange  
Leaside  
St Helens  
Merseyside, UK  
WA9 5XH

T: +44 (0) 3330 164 360  
E: [ngs.uk@dresserutility.com](mailto:ngs.uk@dresserutility.com)

*The Dresser Logo and all Trademarks containing the term "Dresser" are the property of Dresser, LLC, a subsidiary of Baker Hughes.*



*Reed LF Pulse Transmitter Handbook NGS.MI.0037d  
04.22*

The Dresser Natural Gas Solutions (NGS) Reed Low Frequency Pulse Transmitter is designed to be used in combination with Roots® Rotary Displacement B Series Gas Meters and is suitable for connection to Dresser® Electronic Volume Converters, such as the model MC2-197 PTZ and pulse isolation devices such as the Dresser® Chatterbox-e, model 103 along with many other hazardous area approved products.

**Features:**

- Encapsulated "Reed" switch design
- NO (normally open), magnetically activated by the meter index
- Simple two wire direct current connection
- Passive design, classed as simple apparatus as per EN 60079-11
- Meets requirements of UK IGEN GM/7A
- Non-intrusive external fitment to the meter index
- Drill holes for lock wire sealing

THESE INSTRUCTIONS PROVIDE THE CUSTOMER/OPERATOR WITH IMPORTANT PROJECT-SPECIFIC REFERENCE INFORMATION IN ADDITION TO THE CUSTOMER/ OPERATOR'S NORMAL OPERATION AND MAINTENANCE PROCEDURES. SINCE OPERATION AND MAINTENANCE PHILOSOPHIES VARY, DRESSER NGS DOES NOT ATTEMPT TO DICTATE SPECIFIC PROCEDURES, BUT TO PROVIDE BASIC LIMITATIONS AND REQUIREMENTS CREATED BY THE TYPE OF EQUIPMENT PROVIDED.

THESE INSTRUCTIONS ASSUME THAT OPERATORS ALREADY HAVE A GENERAL UNDERSTANDING OF THE REQUIREMENTS FOR SAFE OPERATION OF MECHANICAL AND ELECTRICAL EQUIPMENT IN POTENTIALLY HAZARDOUS ENVIRONMENTS. THEREFORE, THESE INSTRUCTIONS SHOULD BE INTERPRETED AND APPLIED IN CONJUNCTION WITH THE SAFETY RULES AND REGULATIONS APPLICABLE AT THE SITE AND THE PARTICULAR REQUIREMENTS FOR OPERATION OF OTHER EQUIPMENT AT THE SITE.

THESE INSTRUCTIONS DO NOT PURPORT TO COVER ALL DETAILS OR VARIATIONS IN EQUIPMENT NOR TO PROVIDE FOR EVERY POSSIBLE CONTINGENCY TO BE MET IN CONNECTION WITH INSTALLATION, OPERATION OR MAINTENANCE. SHOULD FURTHER INFORMATION BE DESIRED OR SHOULD PARTICULAR PROBLEMS ARISE WHICH ARE NOT COVERED SUFFICIENTLY FOR THE CUSTOMER/OPERATOR'S PURPOSES THE MATTER SHOULD BE REFERRED TO DRESSER NGS.

THE RIGHTS, OBLIGATIONS AND LIABILITIES OF DRESSER NGS AND THE CUSTOMER/ OPERATOR ARE STRICTLY LIMITED TO THOSE EXPRESSLY PROVIDED IN THE CONTRACT RELATING TO THE SUPPLY OF THE EQUIPMENT. NO ADDITIONAL REPRESENTATIONS OR WARRANTIES BY DRESSER NGS REGARDING THE EQUIPMENT OR ITS USE ARE GIVEN OR IMPLIED BY THE ISSUE OF THESE INSTRUCTIONS.

THESE INSTRUCTIONS CONTAIN PROPRIETARY INFORMATION OF DRESSER NGS, AND ARE FURNISHED TO THE CUSTOMER/OPERATOR SOLELY TO ASSIST IN THE INSTALLATION, TESTING, OPERATION, AND/OR MAINTENANCE OF THE EQUIPMENT DESCRIBED. THIS DOCUMENT SHALL NOT BE REPRODUCED IN WHOLE OR IN PART NOR SHALL ITS CONTENTS BE DISCLOSED TO ANY THIRD PARTY WITHOUT THE WRITTEN APPROVAL OF DRESSER NGS.

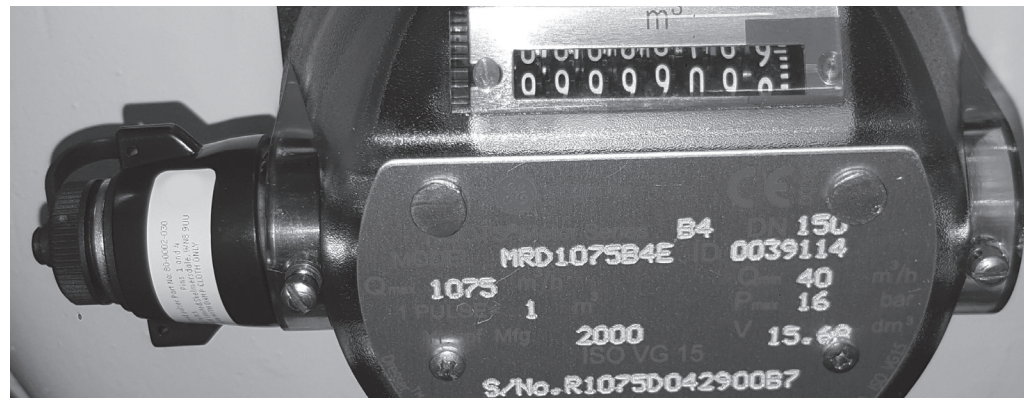
### Specifications:

<b>Housing Colour</b>	Black
<b>Housing Material</b>	Acetal
<b>Temperature range</b>	-20 to 80 °C
<b>Switch power rating (combination of V&amp;A)</b>	10W*
<b>Voltage</b>	≤ 125 V*
<b>Current</b>	≤ 500 mA*
<b>Open resistance</b>	infinite
<b>Closed resistance</b>	≤ 200mΩ
<b>Pulse width (depends on flow rate)</b>	>200ms
<b>Contact bounce</b>	≤ 0.6ms
<b>Switch service life (at 5vdc/10mA)</b>	Typically, 100 million operations

\* Although capable of the parameters listed, regulatory standards for electrical connection in a hazardous area should be observed at all times. It is the installers responsibility to ensure compliance. IGEN/GM/7A guidance is 2.5 to 5V, and ≤ 1mA

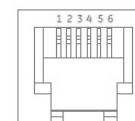
### Installation Instruction:

Locate the LF Pulse transmitter in either the left or right hand dedicated port in the Roots® Rotary Displacement B Series Gas Meter index counter. Hold in place by tightening the set screw in the meter index. Connect the appropriate mating cable observing all safety parameters. The switch is not polarity sensitive.

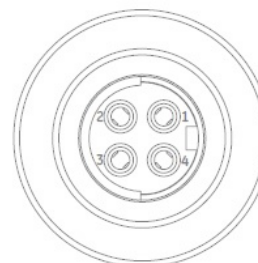


### Pin identification:

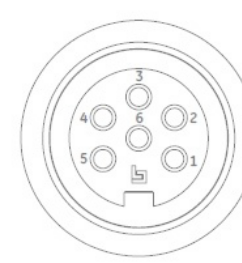
View when looking at the pulser connection.



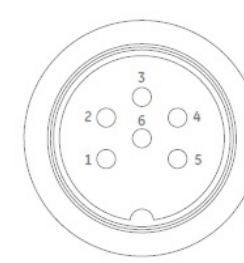
RJ11



FEMALE FISHER



MALE BINDER



FEMALE BINDER

Part Number	Pulser - Connection type	Protection	Impulse connection	
			+	-
80-0002-010	RJ11 socket, 6 way, 4 pin	IP54	4	3
80-0002-020	Binder plug (male), 6 way, DIN	IP67	1	4
80-0002-030	Binder socket (female), 6 way, DIN	IP67	1	4
80-0002-040	Integral 3m cable, LiYCY	IP68	White	Brown
80-0002-050	Fischer socket (female) 4 pin	IP54/IP68*	2	3

\* IP68 when mated with Fischer cable assembly.

### Maintenance:

CAUTION: CLEAN ONLY WITH A DAMP CLOTH

There are no serviceable parts. Opening the housing will invalidate warranty.