

Quick-Cam[®] Extended Range Repair Clamp



**Reduce
Time
On Job**



**Save On
Labor**



**Reduced
Inventory**

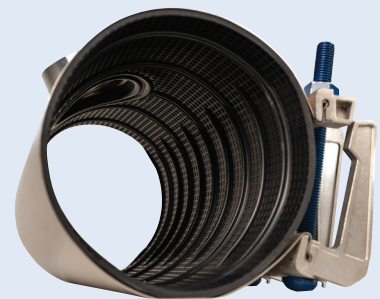
The Quick-Cam has a greater range of fit and sealing performance than many of the traditional band clamps available. With an increased range of fit, the Quick-Cam easily repairs various pipe materials used in natural gas LDC piping systems including IPS, CIP and Oversized CIP with one clamp per nominal diameter: resulting in a realization of a 50% SKU reduction.

The Quick-Cam utilizes a patented sealing design that allows for rapid sealing under full or reduced line pressure conditions. Featuring a specialized multi-O-ring seal bead system in conjunction with a deep waffled mat type seal provides best in class sealing capabilities. A separate double O-ring seal bead design located under the bridge plate allows for rapid sealing while providing a secure seal, even when the pipe is fully broken.

Testing has been completed using a simulated 360-degree beam break test performed at 1.5 times the rated pressure on a test pipe designed with a 1/8" by 3/16" deep pneumatic pressurized groove.

Patented features:

- » Patented lug handle and Cam lug finger closure configuration
- » Gasket utilizes traditional waffle geometry with O-ring seal bead system sizes 3" and above
- » Gas pressure rating 125PSI at -20F to +150F in all sizes up to 12" nominal diameter
- » 360° seal utilizing heavy duty gauge 18-8 stainless steel spanner integral with gasket
- » Non-welded lug to band attachment design to reduce corrosion potential
- » Double coated Xylan (PTFE) hardware
- » NPT outlets available, manufactured using a robust spin-extruded branch to ensure a high strength outlet connection



**Quick-Cam Repair clamps
available with NPT outlets**

Specifications

For Natural Gas Applications

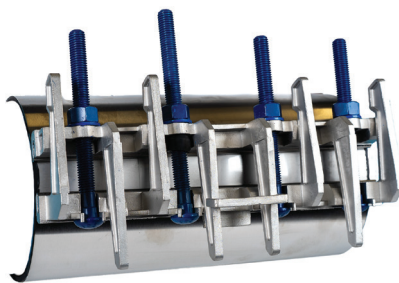
Sizes	Single band 3"-12"
Clamp Widths	3" to 8" diameters available in 7.5" to 30" widths 10" to 12" diameters available in 10" to 30" widths Available widths: 7.5, 10, 12, 15, 20, 24, 30"
Outlets	Available with 1/2" - 2" NPT
Range	0.9" per clamp
Pressure Rating	125 PSI Maximum Working Pressures: 1.5x test pressure 2"-12" nominal diameters
Temperature Rating	-20°F to 150°F
Gaskets	Gridded NBR Rubber for Natural Gas
Shell	Heavy Duty Gauge 18-8 Stainless Steel 0.036"- 0.075" thickness based on diameter
Alignment Lugs	Heavy Duty E-Coated ASTM A-536 Ductile Iron or optional ASTM A351 CF8 Grade 304 Cast Stainless Steel
Spanner Plate	Heavy Duty Gauge 18-8 Stainless Steel integral with gasket
Hardware	Corten Carbon Steel with double Xylan (PTFE) coating: optional 304 stainless steel hardware available

NOTE: Product pressure rating, temperature rating and bolt torque can vary depending on the product diameter, type of connection, and the pipe material being utilized.

* Pressure rating, temperature rating, and bolt torque shown on the product label are the actual ratings of the individual product.

Fewer bolts allows for an easy installation reducing time and labor

	7.5" Width	10" Width	12" Width	15" Width	20" Width	24" & 30" Width
Nominal 3"-8"	2	3	4	4	6	8
Nominal 10"-12"	-	3	4	5	6	10



Integrated Handle for Ease of Installation



Quick-Cam Repair clamps available in E-Coated ductile iron lug system or optional all stainless steel



Dresser Pipeline Solutions
41 Fisher Avenue
Bradford, PA 16701
P: 814-362-9300
F: 800-362-9363
www.dresserutility.com



www.dresserutility.com

© 2024 Natural Gas Solutions North America, LLC – All rights reserved. Dresser Utility Solutions reserves the right to make changes in specifications and features shown herein, or discontinue the product described at any time without notice or obligation. Contact your Dresser Utility Solutions representative for the most current information. The Dresser Logo and all Trademarks containing the term "Dresser" are the property of Dresser, LLC, a subsidiary of Baker Hughes.