

Style 360 Repair Clamps

For QUICK repair of minor leaks, cracks and splits in cast/ductile and steel mains

The Dresser Style 360™ Repair Clamp offers both simplicity of design and ease of installation. Just wrap the clamp around the pipe, drop the bolts in place and tighten...It's that simple!

Moreover, special one-inch long nuts allow the use of a standard deep socket wrench for quick, complete ratchet tightening. In the popular 7.5 inch clamp width, the middle nut can be used to pre-tighten the clamp. Additionally, the smaller sized clamps feature a flexible band which means less holding force is required while tightening.

With the Dresser "360" clamp you can repair holes, breaks and splits in cast, ductile or steel pipelines. You can use it where pipe ends are deflected up to 4 degrees or 1/8 inch.

Clamp features include a tapered gasket with a grid design, with the spanner molded flush with the gasket to prevent "hang up." The "360" has a stainless band, lugs of rugged ductile iron and bolts of corrosion-resistant Dresserloy.

Smaller sizes...

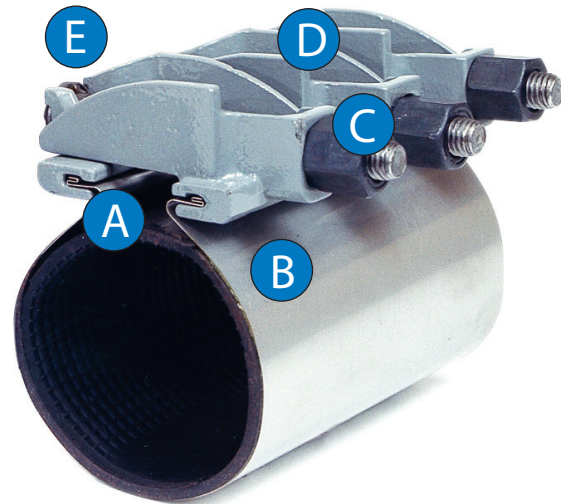
Feature flexible band for easier installation.

Special one-inch long nuts...

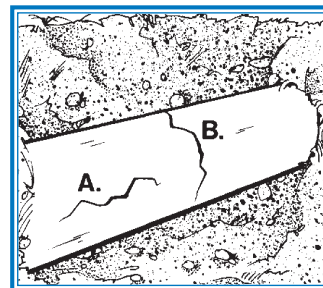
Allow tightening with standard deep socket wrench for quick installation.

Multi-Band Clamp...

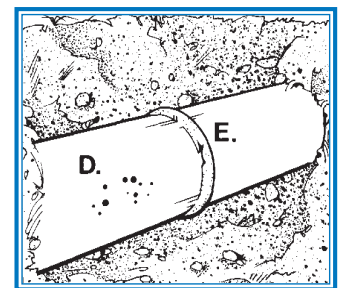
Features a multi-band design in the 14" through 24" sizes. Clamp is packaged and shipped "in the flat" meaning the bands are not formed to the radius of the pipe. Reduces storage space and installation time, and has twice the adjustment range of the single clamp.



- Flexible Spanner (A) and Band (B)...for ease of installation
- Long Nuts (C)...fit standard deep socket wrench
- Ductile Iron Lugs (D)...lower costs
- Drop-In Bolts (E)...no loose parts



Longitudinal or Circumferential Breaks (A, B)



Small Pinhole Leaks, Splits or Corrosion Cracks (D), or Broken Welds (E)

STYLE 360 MATERIALS OF CONSTRUCTION

Metal Parts

Band: AISI Type 304 Stainless Steel

Lugs: Ductile Iron

Nuts: Dresserloy

Bolts: Dresserloy

Spanner: AISI Type 304 Stainless Steel

Gasket

• 55 Durometer

• Gridded Surface

• Mating Ends Tapered

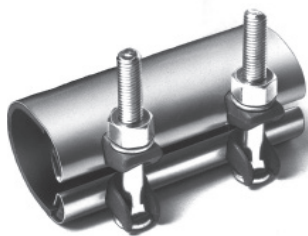
Style 360 Repair Clamp Size Specifications

RANGE OF FIT (OD)	CLAMP WIDTHS (INCHES)	RANGE OF FIT (OD)	CLAMP WIDTHS (INCHES)	
2.35 - 2.63 2.70 - 3.00 2.97 - 3.25	7-1/2, 12-1/2	2 Band Sizes		
3.46 - 3.70 3.73 - 4.00 3.96 - 4.25 4.45 - 4.86 4.74 - 5.14 4.95 - 5.35		15, 20, 30	14.38 - 15.13 15.07 - 15.82 15.92 - 16.67 16.56 - 17.31 17.15 - 17.90 17.82 - 18.57 18.46 - 19.21 19.23 - 19.98 19.90 - 20.65 20.70 - 21.45 21.52 - 22.27 22.12 - 22.87 22.90 - 23.65	
5.22 - 5.62 5.95 - 6.35 6.56 - 6.96 6.84 - 7.24 7.05 - 7.45 7.45 - 7.85 7.95 - 8.35 8.54 - 8.94 8.99 - 9.39 9.27 - 9.67 9.68 - 10.08 9.70 - 10.10 10.64 - 11.04 11.04 - 11.44 11.34 - 11.74 11.75 - 12.15 12.00 - 12.40 12.62 - 13.02 13.10 - 13.50 13.40 - 13.80 13.70 - 14.10 14.00 - 14.40	3 Band Sizes - WATER ONLY			
	7-1/2, 12-1/2, 15, 20, 30		23.28 - 24.38 24.38 - 25.48 25.70 - 26.80 26.48 - 27.58 27.65 - 28.75 28.73 - 29.83 29.62 - 30.71	15, 20, 30

Maximum ng Pressure		
0.024" Thick Band		
Water Service	Gas Service	
2.12 - 3.70" 250 PSI 3.71 - 4.60" 220 PSI 4.61 - 5.35" 170 PSI	2.12 - 5.35" 125 PSI	
0.036" Thick Band		
Water Service	Gas Service	
5.22 - 7.99" 200 PSI 8.00 - 9.75" 160 PSI 9.76 - 12.03" 120 PSI 12.04 - 14.40" 90 PSI	5.22 - 9.43" 125 PSI 9.27 - 10.10" 115 PSI 10.64 - 11.44" 95 PSI 11.34 - 12.40" 85 PSI	
0.036" Thick Band		
Water Service	Gas Service	
3.46 - 7.99" 200 PSI 8.00 - 9.75" 160 PSI 9.76 - 12.03" 120 PSI 12.04 - 14.40" 90 PSI	3.46 - 9.43" 125 PSI 9.44 - 10.81" 115 PSI 10.82 - 12.49" 85 PSI 12.62 - 13.02" 75 PSI 12.50 - 14.40" 65 PSI	
0.048" Thick 2-Band		
Size	Water	Gas
14.38 - 15.13"	130 PSI	105 PSI
15.07 - 15.82"	130 PSI	100 PSI
15.28 - 16.08"	130 PSI	95 PSI
15.92 - 16.67"	120 PSI	90 PSI
15.28 - 16.08"	110 PSI	95 PSI
16.56 - 17.31"	110 PSI	85 PSI
17.15 - 17.90"	110 PSI	80 PSI
17.82 - 19.98"	100 PSI	65 PSI
20.70 - 23.65"	60 PSI	45 PSI
23.28 - 24.38"	45 PSI	N/A
THRU		
29.62 - 30.71"		

NOTE: On any given installation, the pressure capabilities of the clamp is influenced by the type and extent of the damage, service conditions, environmental conditions and installation workmanship.

Also available...For quick, permanent repair of small pinhole leaks and cracks in steel pipe, Dresser offers the Style 118 Handband™ Clamp in size 1/2 thru 8"



NOTE: The Style 118 clamp does not provide a full 360-degree seal on the pipe.

WARNING

When pipe pullout could occur, pipe joint MUST be anchored. Failure to anchor pipe joint could result in escaping line content that could cause property damage, serious injury or death.

Dresser Pipeline Solutions

41 Fisher Avenue
Bradford, PA 16701
P: 814.362.9300
F: 814.362.9344

www.dresserutility.com

© 2021 Dresser Utility Solutions. All Rights Reserved.
The Dresser Logo and all Trademarks containing the term "Dresser" are the property Dresser, LLC, a subsidiary of Baker Hughes.



DPS-017
360.DATA.SHEET.2021