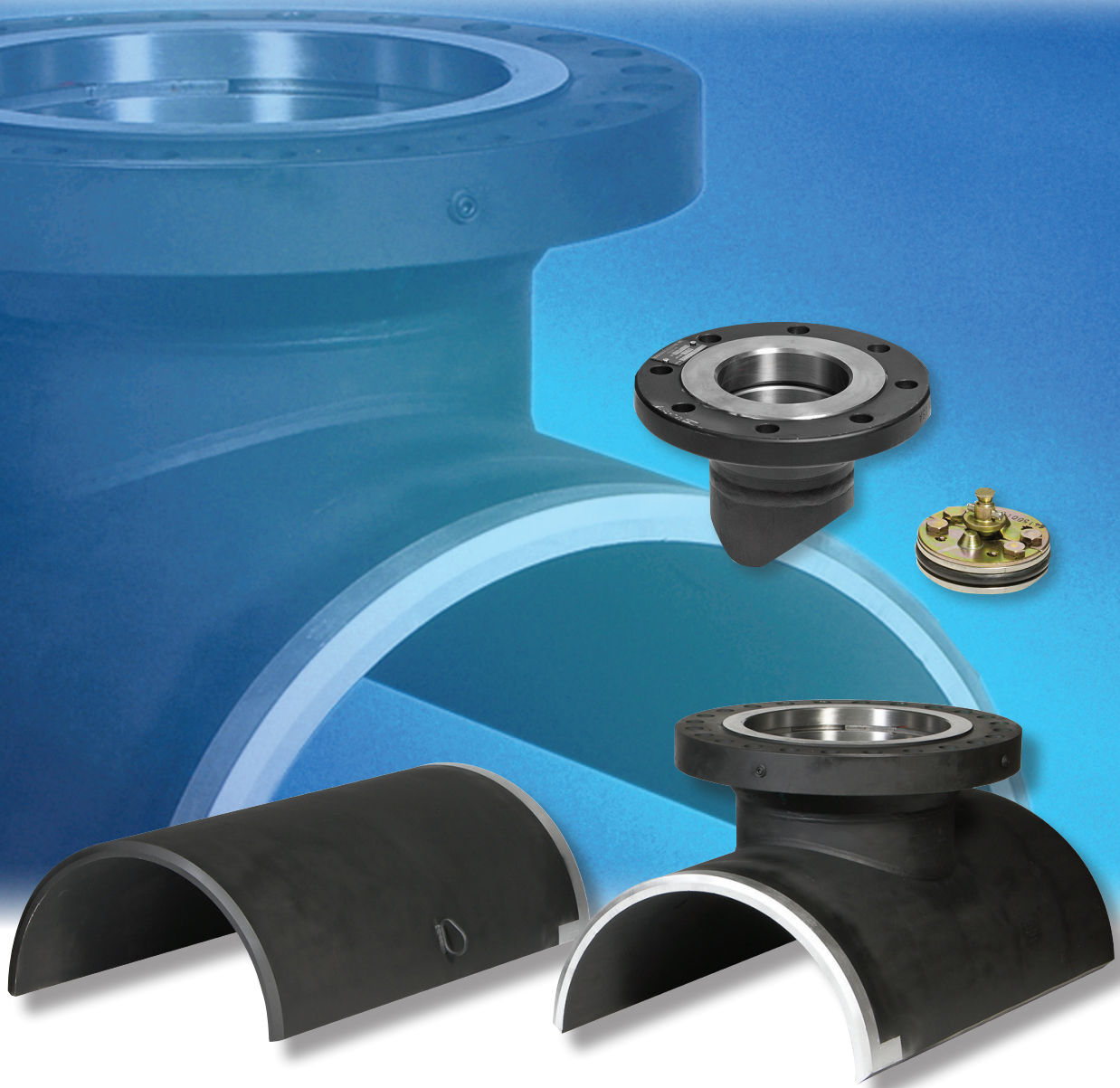


DRESSER HTLS Products for Oil & Gas Energy Piping Systems

Hot Tap and Line Stop Fittings & Sleeves



Dresser offers an extensive line of high quality pressure control fittings for gas energy transmission and distribution piping systems.

Dresser LS-2 fittings are available for steel piping systems in threaded sizes from 1-1/4" through 3" and flange fittings from 4" through 12". LS-2 fittings are designed, tested and manufactured to meet and/or exceed the code area replacement requirements for pressure containment per ASME B31.4 (liquid pipelines) B31.8 (gas pipelines).

The Dresser LS-2 line of fittings is designed for use in Class 1, 2, 3 & 4 locations at the maximum allowable operating pressures of 285 PSI for ANSI Class 150 fittings and 740 PSI for ANSI Class 300 split-sleeve fittings. ANSI Class 300 spherical fittings rated for Class 1, 2, 3, and 4 locations are also available upon request.

Full-encirclement split sleeve line stop fittings are available in ANSI 150, 300, 600 and 900 from 4" through 48" sizes. Fittings can be manufactured with side outlet, Spherical configurations, or with a standard weld neck flange for hot tapping applications. Clearance grooves for backing strips can be provided on request; everything in the catalog is considered standard fittings. Custom fittings are always available, however any changes may de-rate pressure ratings. Line stop flanges and completion plugs are also available.

Dresser pressure control and split sleeve fittings are compatible with industry standard tapping and plugging equipment. All fittings can be designed and certified to ASME/ANSI B31.8 (gas pipelines); and B31.4 (liquid pipelines); B31.3 (chemical plants & refineries); and B31.1 (power plants) meeting DOT 192 federal regulation for gas pipelines; DOT 195 federal regulation for liquid pipelines and most international codes, and on request NACE MR0175 compliance and certification. All fittings are welded in accordance with ASME section IX or API 1104 welding procedures. Dresser employs rigid quality assurance and quality control procedures, as well as in-process inspection and documentation.

CONTENTS

Distribution Products

LS-2 Fittings

CLASS 150 - Max. 285 PSI @ 100°F

Threaded Weld Fittings.....	Page 3
Flanged Weld Fittings.....	Page 3
Reduced Branch Weld Fittings.....	Page 4
Spherical Weld Fittings	Page 4

CLASS 300 - Max. 740 PSI @ 100°F

Spherical Fittings.....	Page 5
Split Sleeve Fittings.....	Page 5
Split Sleeve Fittings w/Side Outlet	Page 5
LS-2 Completion Plugs and Spare O-Rings.....	Page 6
Custom Mechanical Split Sleeves with LS-2 Branch Options.....	Page 6

Transmission Products

Split Sleeve Line Stop Fittings

Class 150 - Max. 285 psi @ 100°F (0.40 Rating)	
Class 300 - Max. 740 psi @ 100°F (0.40 Rating)	
Class 600 - Max. 1480 psi @ 100°F (0.72 Rating)	
Split Sleeve Line Stop Fittings	Page 7
Line Stop Fittings w/Side Outlets.....	Page 8
Line Stop Reducing Branch Fittings.....	Page 8
Line Stop Spherical Fittings	Page 9
Line Stop Flanges.....	Page 9
Line Stop Completion Plugs.....	Page 10
Sealing Cups	Page 10
Purge & Equalization Fittings	Page 10

Product Questionnaire	Page 11
-----------------------------	---------



Dresser Utility Solutions reserves the right to make changes in specifications and features shown herein, or discontinue the product described at any time without notice or obligation. Contact your Dresser sales representative for the most current information.

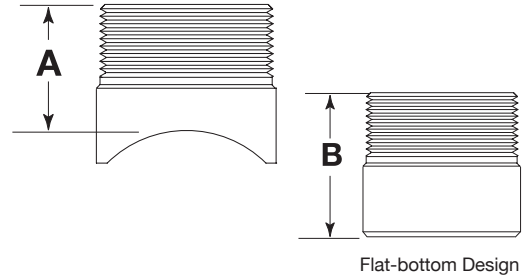
LS-2 Weld Fittings¹ - Class 150²

Max 285 PSI @ 100°F

All dimensions are approximate and given in inches (mm)

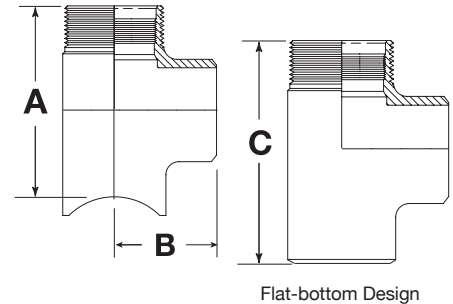
1-1/4" - 3" LS-2 Threaded Weld Fittings - Class 150*						
Size (in)	Size (mm)	Part Number	Weight (lbs)	Weight (kg)	A (in)	B (in)
1-1/4	32	6501-1513-00	1.8	0.8	2.25	2.25
1-1/2	40	6501-1515-00	2	0.9	2.25	3.00
2	50	6501-1502-00	2.5	1.0	1.88	2.50
3	80	6501-1503-00	7.2	3.3	2.75	4.00

* Use Part 6502- for Flat-bottom Design



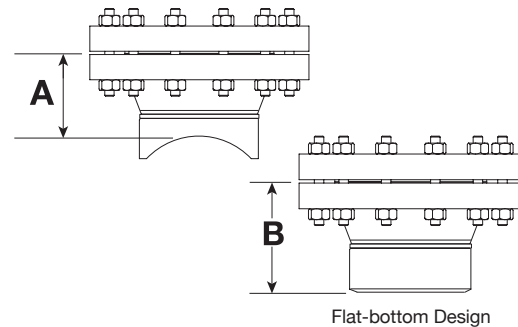
1-1/4" - 3" LS-2 Threaded Weld Fittings w/Side Outlet - Class 150*							
Size (in)	Size (mm)	Part Number	Weight (lbs)	Weight (kg)	A (in)	B (in)	C (in)
1-1/4	32	6511-1513-00	4	1.8	4.75	1.87	4.23
1-1/2	40	6511-1515-00	4	1.8	5.12	2.25	5.12
2	50	6511-1502-00	5.5	2.5	5.25	2.50	5.25
3	80	6511-1503-00	14	6.3	8.00	3.37	7.25

* Use Part 6512- for Flat-bottom Design



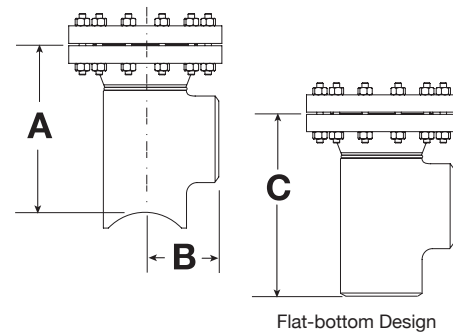
4" - 12" LS-2 Flanged Weld Fittings - Class 150						
Size (in)	Size (mm)	Part Number	Weight (lbs)	Weight (kg)	A (in)	B (in)
4	100	6501-1504-00	20	9.1	4.00	7.25
6	150	6501-1506-00	55	24.9	5.00	7.75
8	200	6501-1508-00	90	40.8	5.00	8.25
10	250	6501-1510-00	145	65.8	5.50	8.25
12	300	6501-1512-00	190	86.2	5.38	8.75

* Use Part 6502- for Flat-bottom Design



4" - 12" LS-2 Flanged Weld Fittings w/Side Outlet - Class 150							
Size (in)	Size (mm)	Part Number	Weight (lbs)	Weight (kg)	A (in)	B (in)	C (in)
4	100	6511-1504-00	35	15.9	9.80	4.12	11.38
6	150	6511-1506-00	55	24.9	13.32	5.62	14.75
8	200	6511-1508-00	130	59.0	14.81	7.00	18.00
10	250	6511-1510-00	185	83.9	19.00	8.50	21.00
12	300	6511-1512-00	280	127.0	21.50	10.00	24.50

* Use Part 6512- for Flat-bottom Design



¹ Includes Standard Plug and Blind Flange Kit

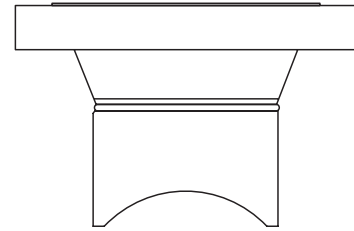
² Flat bottom design also available



LS-2 Reduced Branch Weld Fittings¹ - Class 150²

Max 285 PSI @ 100°F

LS-2 Reduced Branch Weld Fittings Class 150					
Size (in)	Size (mm)	Part Number	Configuration	Weight (lbs)	Weight (kg)
2 x 4	50 x 100	6501-0204-00	Threaded	2.5	1.0
3 x 4	80 x 100	6501-0304-00	Threaded	7.2	3.3
4 x 6	100 x 150	6501-0406-00	Flanged	20	9.0
6 x 8	150 x 200	6501-0608-00	Flanged	55	25
8 x 10	200 x 250	6501-0810-00	Flanged	90	41
8 x 12	200 x 300	6501-0812-00	Flanged	90	41



¹ Includes Standard Plug and Blind Flange Kit

² Flat bottom design also available



LS-2 Spherical Weld Fittings¹ - Class 150

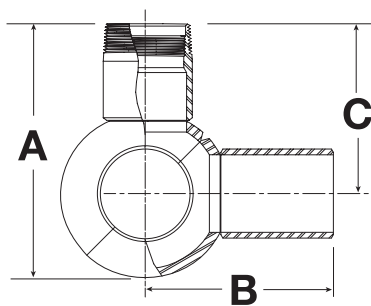
Max 285 PSI @ 100°F

All dimensions are approximate and given in inches (mm)

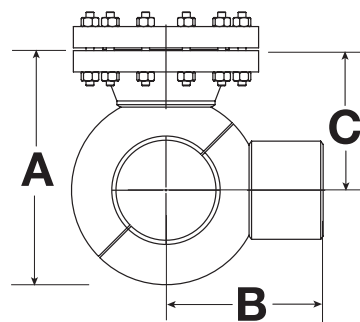
2" - 12" LS-2 Spherical Fittings - Class 150														
Size (in)	Size (mm)	Part Number	Weight (lbs)	Weight (kg)	A (in)	A (mm)	B (in)	B (mm)	C (in)	C (mm)	D (in)	D (mm)	E (in)	E (mm)
2	50	6523-1502-00	7	3.18	6.85	174	5.10	130	4.65	118	9.70	246	3.65	95
3	80	6523-1503-00	19	8.62	10.20	259	7.50	190	6.90	175	14.40	366	5.75	146
4	100	6523-1504-00	60	27.2	11.20	285	9.37	237	6.90	175	16.19	411	7.25	184
6	150	6523-1506-00	115	52.2	15.75	400	11.25	290	9.25	238	20.00	525	10.62	271
8	200	6523-1508-00	198	89.8	19.00	485	12.50	320	11.00	280	23.50	600	13.25	340
10	250	6523-1510-00	272	123.3	22.63	575	14.12	360	12.63	325	26.75	680	16.50	425
12	300	6523-1512-00	444	201.3	27.25	690	16.25	410	15.15	385	31.25	795	20.00	510

¹ Includes Standard Plug and Blind Flange Kit

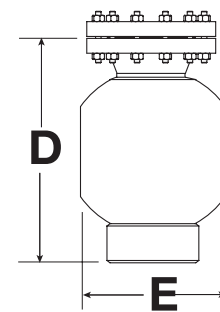
NOTE: 285 PSI Pressure Rating; Maximum allowable operating pressure at 100°F with completion plug and cap or blind flange installed in Class 1, 2, 3 & 4 locations.



2" and 3" sizes include threaded fitting design



Flanged design 4" - 12" w/side outlet



Bottom outlet design 90° view

LS-2 Spherical Weld Fittings¹ - Class 300

Max 740 PSI @ 100°F .4 DF

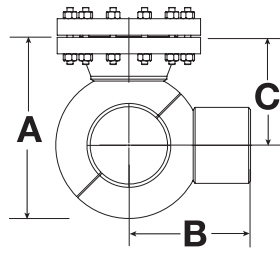
All dimensions are approximate and given in inches (mm)

2" - 12" LS-2 Spherical Sleeve Fittings - Class 300															
Size (in)	Size (mm)	Part Number	Design Factor	Weight (lbs)	Weight (kg)	A (in)	A (mm)	B (in)	B (mm)	C (in)	C (mm)	D (in)	D (mm)	E (in)	E (mm)
2 ²	50	6523-3002-00	.4	7.35	3.4	6.87	175	5.06	129	4.65	118	9.68	246	2.87	72.9
3 ²	80	6523-3003-00	.4	23.5	10.5	10.19	259	7.50	190	6.88	174	14.38	365	5.75	146
4 ²	100	6523-3004-00	.4	76	34.5	11.56	294	9.32	237	7.25	184	16.56	420	7.25	184
6	150	6523-3006-00	.72	162	73.4	15.75	400	7.63	194	9.38	238	17.00	432	10.13	257
8	200	6523-3008-00	.72	273	123.8	16.50	419	8.25	210	9.50	241	17.75	451	10.25	260
10	250	6523-3010-00	.72	451	204.5	20.63	524	10.38	264	11.63	295	22.00	559	13.50	343
12	300	6523-3012-00	.72	603	273.5	22.25	565	11.25	286	12.25	311	23.50	597	14.50	368

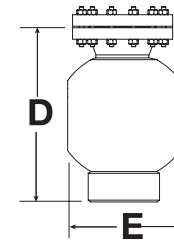
¹ Includes standard plug and blind flange kit

² For Class 1 thru 4 (.4 DF)

NOTE: 6"-12" All Class 0.40 Fully-rated available on application. Consult Factory



Side Outlet Design - Linear View



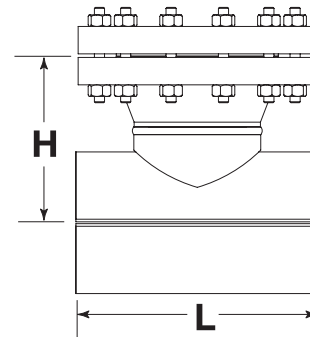
Bottom Outlet Design 90° View

LS-2 Split Sleeve Fittings¹ - Class 300

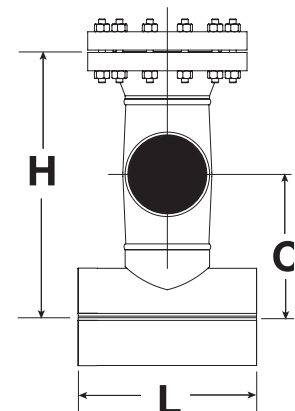
Max 740 PSI² @ 100°F .4 DF

All dimensions are approximate and given in inches (mm)

2" - 12" LS-2 Split Sleeve Fittings - Class 300								
Size (in)	Size (mm)	Part Number	Weight (lbs)	Weight (kg)	H (in)	H (mm)	L (in)	L (mm)
2*	50	6503-3002-00	9	4	5.56	141	5.75	146
3*	80	6503-3003-00	16	7	8.00	203	7.50	190
4	100	6503-3004-00	77	35	6.25	159	10.75	273
6	150	6503-3006-00	146	66	7.87	200	14.00	356
8	200	6503-3008-00	233	106	9.50	241	16.50	419
10	250	6503-3010-00	347	170	11.00	279	20.00	508
12	300	6503-3012-00	557	253	12.75	324	22.00	559



2" - 12" LS-2 Split Sleeve Fittings w/Side Outlet - Class 300										
Size (in)	Size (mm)	Part Number	Weight (lbs)	Weight (kg)	C (in)	C (mm)	H (in)	H (mm)	L (in)	L (mm)
2*	50	6513-3002-00	10	4.5	4.75	121	8.00	203	5.75	146
3*	80	6513-3003-00	20	7.25	7.25	183	11.00	279	7.50	190
4	100	6513-3004-00	92	41.5	7.25	183	13.50	343	10.75	273
6	150	6513-3006-00	182	82.5	9.87	251	19.20	488	14.00	356
8	200	6513-3008-00	296	134	12.37	314	23.50	600	16.50	419
10	250	6513-3010-00	475	215	15.25	387	28.00	711	20.00	508
12	300	6513-3012-00	699	317	17.87	454	32.70	830	22.00	559



¹ Includes standard plug and blind flange kit

² 740 PSI Pressure Rating: Maximum allowable operating pressure at 100°F with completion plug and cap or blind flange installed in Class 1, 2, 3 & 4 locations.

* 2" and 3" sizes made from seamless pipe. NOTE: 4"-12" split tee encirlement fittings are built on extruded MSS SP75 WPHY52 split tees. Other sizes and reducing variants are fabricated.

LS-2 Completion Plugs and O-Ring Accessories

All dimensions are approximate and given in inches (mm)

1-1/4" - 3" LS-2 Completion Plugs for Class 150 & 300					
Size (in)	Size (mm)	Completion Plug Part Number	Weight (lbs)	Weight (kg)	Spare O-Ring* Part Number
1.25	32	6430-0001-00	.5	.22	2002-0220-00
1.5	38	6430-0002-00	.5	.22	2002-0130-00
2	50	6430-0002-00	.5	.22	2002-0130-00
3	80	6430-0003-00	2	.90	2002-0148-00



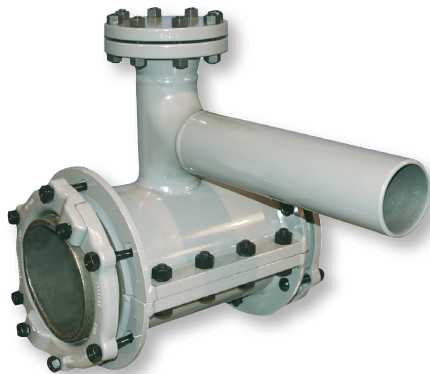
4" - 12" LS-2 Completion Plugs for Class 150					
Size (in)	Size (mm)	Completion Plug Part Number	Weight (lbs)	Weight (kg)	Spare O-Ring* Part Number
4	100	6430-0004-00	10	4.5	2001-6004-01
6	150	6415-0006-00	20	9.1	2001-6006-01
8	200	6415-0008-00	30	13.6	2001-6008-01
10	250	6415-0010-00	50	22.6	2001-6010-01
12	300	6415-0012-00	70	31.7	2001-6012-01



4" - 12" LS-2 Completion Plugs for Class 300					
Size (in)	Size (mm)	Completion Plug Part Number	Weight (lbs)	Weight (kg)	Spare O-Ring* Part Number
4	100	6430-0004-00	10	4.5	2001-6004-01
6	150	6430-0006-00	21	9.5	2001-6006-01
8	200	6430-0008-00	31	14	2001-6008-01
10	250	6430-0010-00	52	24	2001-6010-01
12	300	6430-0012-00	75	34	2001-6012-01

* Standard O-Ring BUNA-N 70 Durometer

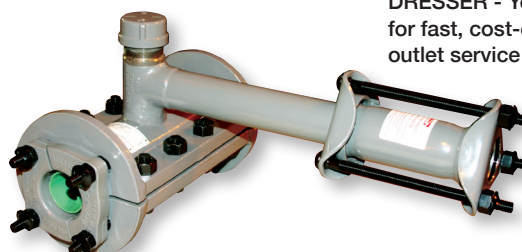
Dresser Mechanical Sleeves¹ available with LS-2 Hot Tap Fittings



Shown above is a Dresser Pipeline Solutions' Style 50 mechanical split sleeve with custom-built LS-2 weld fitting with side outlet permitting optional coupled PE transitions.

When field welding is NOT an option, Dresser offers mechanical split sleeves integrated with LS-2 fittings with side outlets for hot tap service connections on CIP or Steel pipes.

- Custom-fabrication to your exact size specifications
- Pre-engineered configurations
- Eliminates the need for field welding
- Factory-tested, factory-coated
- Ideally suited for cast-iron piping applications or where application conditions preclude field welding



DRESSER - Your one-stop shopping solution for fast, cost-effective hot tapping and branch outlet service connections!

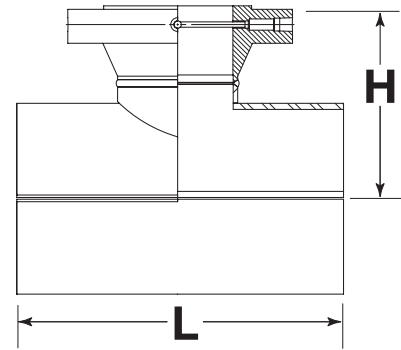
¹ All mechanical hot tap sleeves with LS-2 fittings are made to order. Consult Dresser inside sales for your particular requirements and applications.

Split Sleeve Line Stop Fittings* - Class 150¹

Max 285 PSI @ 100°F 0.4 DF

All dimensions are approximate and given in inches

4" - 36" Line Stop Fittings - Class 150 - Max 285 PSI @ 100°F Meets .4 DF						
Size (in)	Size (mm)	Part Number	Weight (lbs)	Weight (kg)	H (in)	L (in)
4	100	6315-0004-00	45	20	7.10	10.75
6	150	6315-0006-00	75	34	8.59	14.00
8	200	6315-0008-00	115	52	10.18	16.50
10	250	6315-0010-00	185	84	11.00	20.00
12	300	6315-0012-00	280	130	12.62	22.00
14	350	6315-0014-00	365	165	13.50	26.00
16	400	6315-0016-00	560	255	15.75	30.00
20	500	6315-0020-00	970	440	17.68	36.00
24	600	6315-0024-00	1340	607	20.50	43.00
26	650	6315-0026-00	1340	670	21.15	47.00
30	750	6315-0030-00	1750	793	26.25	51.00
36	900	6315-0036-00	2430	1100	30.50	60.00



Dresser line stop fittings can be custom-designed to your particular pipeline specifications.

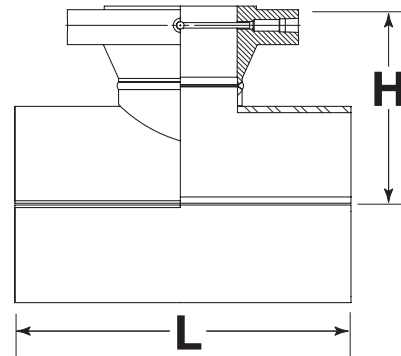
Blind flange kits and completion plugs are sold separately.

Split Sleeve Line Stop Fittings* - Class 300¹

Max 740 PSI @ 100°F 0.4 DF

All dimensions are approximate and given in inches

4" - 36" Line Stop Fittings - Class 300 - Max 740 PSI @ 100°F Meets .4 DF						
Size (in)	Size (mm)	Part Number	Weight (lbs)	Weight (kg)	H (in)	L (in)
4	100	6330-0004-00	55	25	7.124	10.75
6	150	6330-0006-00	87	39	8.375	14.00
8	200	6330-0008-00	125	52	10.31	16.50
10	250	6330-0010-00	185	88	11.71	20.00
12	300	6330-0012-00	195	136	13.00	22.00
20	500	6330-0020-00	685	446	18.37	36.00
24	600	6330-0024-00	1075	720	22.12	43.00
26	650	6330-0026-00	1590	788	23.25	47.00
30	750	6330-0030-00	1950	1021	26.25	51.00
36	900	6330-0036-00	3065	1388	30.50	60.00



Split Sleeve Line Stop Fittings* - Class 600¹

Max 1480 PSI @ 100°F

All dimensions are approximate and given in inches

4" - 36" Line Stop Fittings - Class 600 - Max 1480 PSI @ 100°F										
Size (in)	Size (mm)	Part Number	Weight (lbs)	Weight (kg)	H (in)	L (in)	Pressure Ratings (psig)			
							DF.72	DF.6	DF.5	DF.4
4	100	6360-0004-00	60	27	5.69	10.75	1480	1480	1480	1400
6	150	6360-0006-00	100	45	9.56	14	1480	1480	1330	1070
8	200	6360-0008-00	160	73	11.19	14	1480	1480	1250	1000
10	250	6360-0010-00	280	127	13.00	20	1480	1220	1010	810
12	300	6360-0012-00	385	175	14.25	22	1480	1230	1020	820
14	350	6360-0014-00	540	245	15.12	26	1480	1460	1220	970
16	400	6360-0016-00	690	314	17.25	30	1480	1480	1360	1090
20	500	6360-0020-00	1210	550	19.75	36	1480	1270	1050	840
24	600	6360-0024-00	1895	861	22.75	43	1480	1290	1080	860
30	750	6360-0030-00	3050	1386	28.00	51	1480	1300	1080	870
34	850	6360-0034-00	4105	1866	29.75	57	1480	1260	1050	840
36	900	6360-0036-00	5155	2343	31.00	61	1480	1250	1040	830

* NOTE: 4"-12" split tee encirlement fittings are built on extruded MSS SP75 WPHY52 split tees. Other sizes and reducing variants are fabricated.

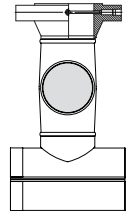
¹ Change part number end digits to -20 for same with backing strips

Split Sleeve Line Stop Fittings* w/Side Outlet

Class 150, 300 and 600

Change part number end digits to -20 for same with backing strips

4" - 30" Split Sleeve Line Stop Fittings w/Side Outlet @ 100° F										
Size (in)	Size	Class 150 Max 285 PSI @ 100°F Meets .4 DF Part Number	Weight (lbs)	Weight (kg)	Class 300 Max 740 PSI @ 100°F Meets .4 DF Part Number	Weight (lbs)	Weight (kg)	Class 600 Max 1480 PSI @ 100°F Meets .72 DF Part Number	Weight (lbs)	Weight (kg)
4	100	6313-1504-00	60	26	6313-3004-00	70	32	6313-6004-00	73	33
6	150	6313-1506-00	105	48	6313-3006-00	123	56	6313-6006-00	130	60
8	200	6313-1508-00	175	80	6313-3008-00	186	84	6313-6008-00	220	100
10	250	6313-1510-00	290	132	6313-3010-00	286	130	6313-6010-00	385	175
12	300	6313-1512-00	420	190	6313-3012-00	447	203	6313-6012-00	528	240
14	350	6313-1514-00	570	258	6313-3014-00	636	288	6313-6014-00	746	338
16	400	6313-1516-00	830	377	6313-3016-00	802	363	6313-6016-00	955	433
18	450	6313-1518-00	990	450	6313-3018-00	1018	462	6313-6018-00	1133	514
20	500	6313-1520-00	1340	608	6313-3020-00	1489	675	6313-6020-00	1579	716
22	550	6313-1522-00	1630	740	6313-3022-00	1630	740	6313-6022-00	2189	1000
24	600	6313-1524-00	1840	835	6313-3024-00	2355	1068	6313-6024-00	3110	1410
30	750	6313-1530-00	2670	1210	6313-3030-00	3385	1535	6313-6030-00	3976	1803



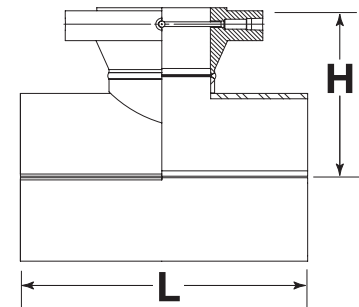
* NOTE: 4"-12" split tee encirclement fittings are built on extruded MSS SP75 WPHY52 split tees. Other sizes and reducing variants are fabricated.

Split Sleeve Line Stop Fittings w/Reducing Branch

Class 150, 300 and 600

All dimensions are approximate and given in inches

Line Stop w/Reducing Branch @ 100° F Meets .4 DF							
		Class 150 - Max 285 psi @ 100°F			Class 300 - Max 740 psi @ 100°F		
Size (in)	Weight (lbs)	Class 150 Part Number	Dim L. (in)	Dim H (in)	Class 300 Part Number	Dim L. (in)	Dim H (in)
6 x 4	60	ALL SIZES CUSTOM BUILT TO ORDER CONSULT FACTORY PER APPLICATION	10.75	8.50	ALL SIZES CUSTOM BUILT TO ORDER CONSULT FACTORY PER APPLICATION	10.75	9.00
8 x 4	70		10.75	9.50		10.75	10.00
10 x 6	130		14.00	11.25		14.00	11.25
12 x 6	175		14.00	12.25		14.00	12.75
14 x 8	220		16.50	13.50		16.50	13.75
16 x 12	320		22.00	15.00		22.00	15.50
20 x 12	530		22.00	17.00		22.00	17.50



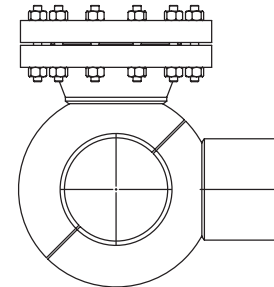
Blind flange kits sold separately

Line Stop w/Reducing Branch - Class 600 - Max 1480 psi @ 100°F Meets .72 DF				
Size (in)	Weight (lbs)	Class 600 Part Number	Dim L. (in)	Dim H (in)
6 x 4	80	ALL SIZES CUSTOM BUILT TO ORDER CONSULT FACTORY PER APPLICATION	10.75	9.50
8 x 4	90		10.75	10.50
10 x 6	175		14.00	12.25
12 x 6	200		14.00	13.50
14 x 8	295		16.50	14.75
16 x 12	495		22.00	16.75
20 x 12	680		22.00	19.00

Split Sleeve Line Stop Spherical Fittings

Class 150, 300 and 600 Max Temp 100°F

Line Stop Spherical Fittings for Sizes 4" - 30" @ 100° F					
Size (in)	Size (mm)	Weight (lbs)	Class 150 Max 285 PSI @ 100°F Meets .4 DF Part Number	Class 300 Max 740 PSI @ 100°F Meets .4 DF Part Number	Class 600 Max 1480 psi @ 100°F Meets .72 DF Part Number
4	100	100	6323-1504-00	6323-3004-00	6323-6004-00
6	150	150	6323-1506-00	6323-3006-00	6323-6006-00
8	200	200	6323-1508-00	6323-3008-00	6323-6008-00
10	250	250	6323-1510-00	6323-3010-00	6323-6010-00
12	300	300	6323-1512-00	6323-3012-00	6323-6012-00
14	350	350	6323-1514-00	6323-3014-00	6323-6014-00
16	400	400	6323-1516-00	6323-3016-00	6323-6016-00
18	450	450	6323-1518-00	6323-3018-00	6323-6018-00
20	500	500	6323-1520-00	6323-3020-00	6323-6020-00
22	550	550	6323-1522-00	6323-3022-00	6323-6022-00
24	600	600	6323-1524-00	6323-3024-00	6323-6024-00
30	650	750	6323-1530-00	6323-3030-00	6323-6030-00

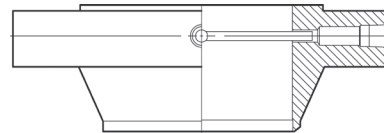


Blind flange kits sold separately

Line stop spherical fittings are offered in size-on-size design. Reducing size configurations and custom branch outlets are available upon request.

Line Stop Flanges

Class 150, 300 and 600 Max Temp 100°F

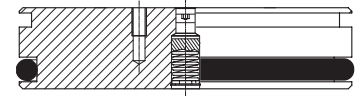


Line Stop Flanges for Sizes 4" - 30"							
Size (in)	Size (mm)	Class 150 Max 285 PSI @ 100°F Part Number	Weight (lbs)	Class 300 Max 740 PSI @ 100°F Part Number	Weight (lbs)	Class 600 Max 1480 PSI @ 100°F Part Number	Weight (lbs)
4	100	6100-1504-00	16	6100-3004-00	21	6100-6004-00	40
6	150	6100-1506-00	25	6100-3006-00	41	6100-6006-00	77
8	200	6100-1508-00	40	6100-3008-00	70	6100-6008-00	113
10	250	6100-1510-00	56	6100-3010-00	94	6100-6010-00	185
12	300	6100-1512-00	86	6100-3012-00	140	6100-6012-00	224
14	350	6100-1514-00	111	6100-3014-00	190	6100-6014-00	334
16	400	6100-1516-00	141	6100-3016-00	250	6100-6016-00	462
18	450	6100-1518-00	153	6100-3018-00	305	6100-6018-00	531
20	500	6100-1520-00	188	6100-3020-00	380	6100-6020-00	678
24	600	6100-1524-00	270	6100-3024-00	540	6100-6024-00	959
30	750	6100-1530-00	360	6100-3030-00	880	6100-6030-00	1230

NOTE: Class 900 flanges available upon request. Contact Dresser inside sales for details and specifications.

Line Stop Completion Plugs Class 150, 300 and 600

Line Stop Completion Plugs for Sizes 4" - 36"							
Size (in)	Size	Solid Part Number	Weight (lbs)	Scarfed* Part Number	Weight (lbs)	Flow-Thru* Part Number	Weight (lbs)
4	100	6200-6004-00	10		12		5
6	150	6200-6006-00	20	ALL SIZES CUSTOM BUILT TO ORDER CONSULT FACTORY PER APPLICATION	24	ALL SIZES CUSTOM BUILT TO ORDER CONSULT FACTORY PER APPLICATION	9
8	200	6200-6008-00	35		42		16
10	250	6200-6010-00	60		65		27
12	300	6200-6012-00	90		100		41
14	350	6200-6014-00	110		125		50
16	400	6200-6016-00	112		135		52
18	450	6200-6018-00	112		160		54
20	500	6200-6020-00	120		180		68
24	600	6200-6024-00	225		305		169
30	750	6200-6030-00	520		700		275
32	800	6200-6032-00	520		740		302
36	900	6200-6036-00	850		875		592



Solid Completion Plug
(Guide-Bar Plugs Available On Request)



Scarfed nipple completion plug*
available for replacing coupon in
tapped hole



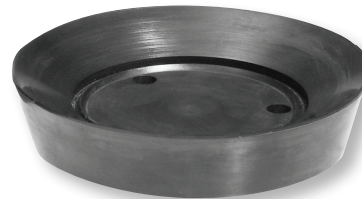
Flow-Thru Completion Plug*

NOTE: Class 900 completion plugs available. Contact Dresser inside sales for details and specifications.

* Scarfed nipple and flow-thru plugs are custom built-to-order and available only on special request.

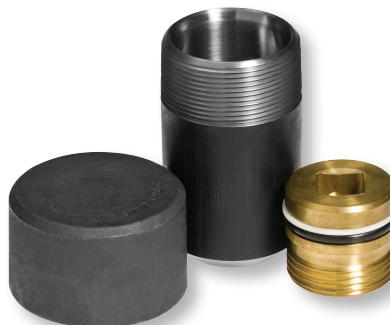
LS-2 Sealing Cups

60 Series - Standard Wall Sealing Cups - 60 PSI @ 100°F				
Size (in)	Part Number	Weight (lbs)	Min Pipe ID (in)	Max. Pipe ID (in)
1.25	7200-0125-00	.1	1.31	1.38
2	7200-0002-00	.1	2.07	2.13
3	7200-0003-00	.2	3.07	3.19
4	7200-0004-00	.5	4.03	4.19
6	7200-0006-00	.8	6.07	6.31
8	7200-0008-00	1	7.98	8.28
10	7200-0010-00	2	10.02	10.37
12	7200-0012-00	3	11.94	12.37



Purge & Equalization Fittings

Purge & Equalization Fittings		
Size (in)	Weight (lbs)	Part Number
2	6.5	6600-6002-00
3	12.5	6600-6003-00



HOT TAP AND LINE STOP PRODUCT QUESTIONNAIRE

Let us help you determine your hot tap and line stop product needs.

Please copy and fill out the specification data form below and
Email to dps.custcare@dresserutility.com or Fax to: +1 800.362.9363

Company Name: _____

Contact Name: _____

Phone: _____ Fax: _____

Email: _____

Size of Fitting:

Run: _____ Branch: _____ Side Outlet: _____

Flange Class: _____

Design Code: B31.8 B31.4 B31.3 B31.1

Design Parameters

Design Pressure: _____ Design Temperature: _____

Design Factor: .72 .6 .5 .4

Other: _____

Pipeline Information:

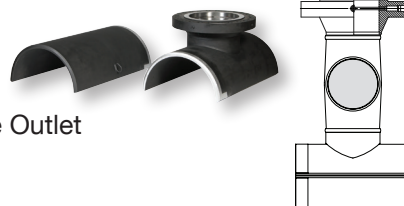
Nominal Size: _____ Wall Thickness: _____ Material: _____

Product: _____ Corrosion Allowance: _____

Fitting Style: Line Stop Fitting Hot Tap Fitting

Backup Strip: No Yes

Fitting Type: Full Encirclement Split Sleeve
 Full Encirclement Split Sleeve w/Side Outlet
 Nozzle Type Fitting
 Spherical



Flange Type: Raised Face Weld Neck Line Stop Flange Ring Type Joint (RTJ)

Plug: Completion Plug
 Solid Completion Plug w/Scarfed Nipple
 Solid Completion Plug w/Guide Bars (Consult Factory)
 Flow-Thru Plug (Consult Factory)

O-Rings: BUNA-N EPDM VITON B

Standard Line Stop O-Ring: BUNA-N 70 Durometer

(Standard Line Stop Plug Flange Segment O-Ring - VITON)

Additional Comments/Requirements:

Dresser Pipeline Solutions

41 Fisher Avenue
Bradford, PA 16701
T: 814.362.9300
F: 814.362.9344

© 2021 Natural Gas Solutions North America, LLC - All rights reserved.
Dresser Utility Solutions reserves the right to make changes in specifications and features shown herein, or discontinue the product described at any time without notice or obligation. Contact your Dresser sales representative for the most current information.

The Dresser Logo and all Trademarks containing the term "Dresser" are the property of Dresser, LLC, a subsidiary of Baker Hughes



DPS-008
HTLS.PRODUCTS.2021