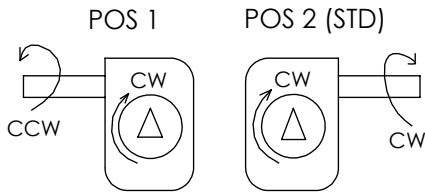


CONSULT FACTORY FOR SPECIAL CONFIGURATIONS.



SPRING HANDLE LOCKS UNIT IN ENGAGED OR DISENGAGED POSITION.

UNIT SHOWN IN ENGAGED POSITION.

GREASED FOR LIFE.

PLATED STANDARD SHAFT.

MAX DRIVER BORE & KEY

MAX IN LINE	MAX
$\phi .750$.188 X .125 KEY	$\phi .875$.250 X .188 KEY

HANDWHEEL

RECOMMENDED ϕ : 10 IN
RIM PULL AT
MAX TORQUE: 74 LBS
TURNS FOR 90°: 7.5

WEIGHT
UNIT: 11 LBS [5 KG]
DRIVER: 2 LBS [.9 KG]
HANDWHEEL: 7 LBS [3.2 KG]

RATIO: 30:1
OVERRIDE TORQUE: 3,000 IN LBS [339 N-M]
DOUBLE ACTING ACTUATORS
MAX VALVE TORQUE: 2,400 IN LBS [271 N-M]
SPRING RETURN ACTUATORS
MAX SPRING END TORQUE: 1,100 IN LBS [124 N-M]
TEMPERATURE: -20° TO 150°F [-29° TO 66°C]

HOUSING MOUNTING PATTERN

COVER MOUNTING PATTERN

MAX	MAX ON CENTER	STD	MIN	MAX	MAX ON CENTER	STD	MIN
$\phi 4.016$ 3/8-16	$\phi 3.750$ 3/8-16	$\phi 2.756$ 5/16-18	$\phi 1.968$ 1/4-20	$\phi 4.250$ $\phi .406$	$\phi 4.250$ $\phi .406$	$\phi 2.756$ $\phi .344$	$\phi 2.756$ $\phi .344$

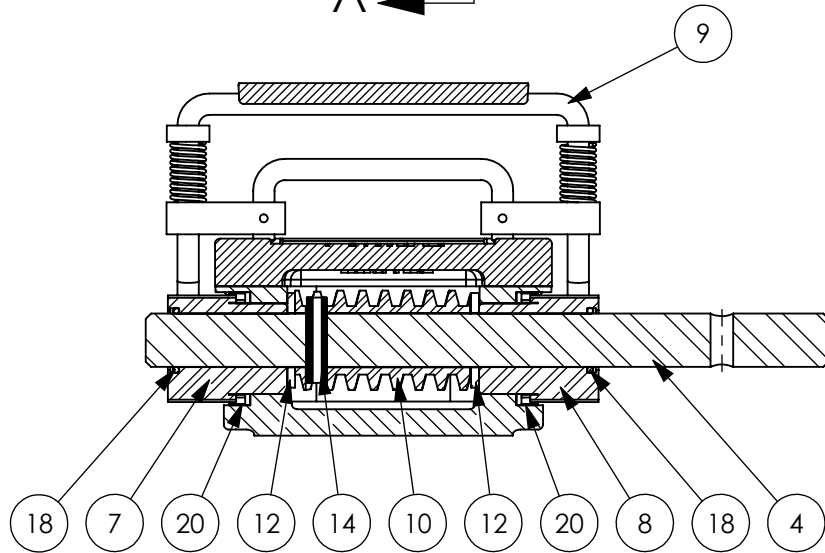
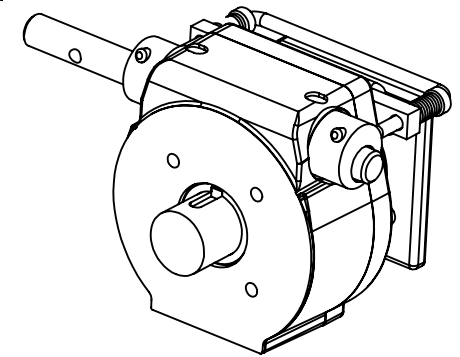
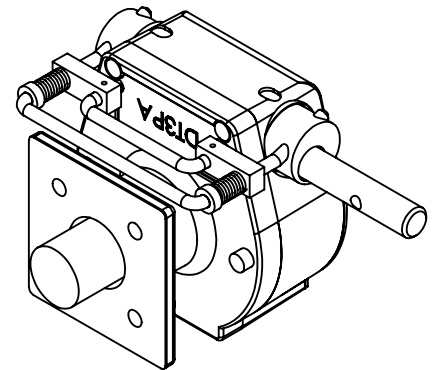
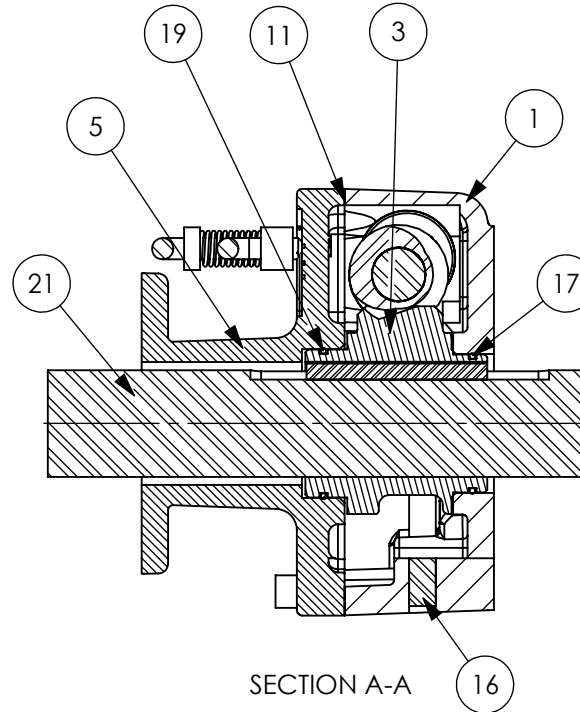
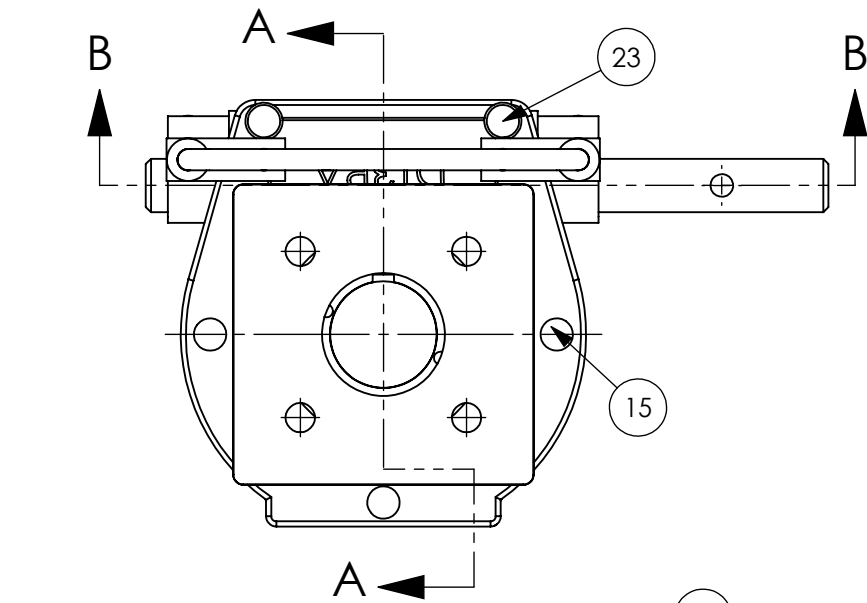
**MANUAL 1/4 TURN ACTUATOR
COMMERCIAL GRADE**

DYNATORQUE

WWW.DYNATORQUE.COM

A BRAND OF CAMERON

**DT3
SD**



SECTION B-B

- 6 UNIT IS E-COATED
- 11 UNIT HAS SILICONE GASKET
- 13 UNIT BEARINGS, O-RINGS AND GEAR TEETH ARE GREASED.
- 22 HWCR 10" HANDWHEEL NOT SHOWN.

ITEM	QTY.	DESCRIPTION	ITEM	QTY.	DESCRIPTION
1	1	HOUSING, DT3SD	16	2	SET SCREW, 5/16-18
3	1	W/WHEEL, DT3	17	1	O-RING, 2-028
4	1	SHAFT, DT3SD	18	2	O-RING, 2-016
5	1	COVER, DT3SD	19	1	O-RING, 2-028
6	1	BLACK E-COAT	20	2	LIP SEAL, 1.125
7	1	DECL BSHG, DT3SD, SS, INBOARD	21	1	DR SD, DT3, BLANK, STD
8	1	DECL BSHG, DT3SD, SS, OUTBOARD	22	1	HWCR 10"
9	1	DECL HANDLE, DT3SD, S.S.	23	2	SHCS, 1/4-20 X .62
10	1	WORM, DT2/3/5			
11	1	RTV SEALANT			
12	2	THRUST WASHER, .625, .092			
13	1	GREASE, COMMERCIAL GRADE			
14	1	COIL PIN, .250, 1.00			
15	3	SHCS, 1/4-20 X .87			

DYNATORQUE
 WWW.DYNATORQUE.COM
 A BRAND OF CAMERON

**DT3
SD**