



Dresser Meter with IMCW2,  
Model ptz-dp + LOG

# Dresser Micro Corrector - IMCW2

## Integral Volume Correction Differential Pressure (DP) Monitoring

Versions: ptz-dp + LOG, T-dp + LOG, ptz  
+ LOG, P + LOG, and T + LOG

Dresser Measurement offers an integrated solution, the Dresser Differential Pressure (DP) Micro Corrector, which monitors meter health by continuous measurement of the differential pressure drop across the meter. The Dresser Micro Corrector DP is capable of learning the differential pressure curve for an individual meter. During the learning period, DP is monitored using typical values from preprogrammed DP reference curves.

The Dresser Micro Corrector DP retains the last valid average differential pressure measurement on the LCD of the corrector along with the date when this occurred. It also displays the average line pressure, average line temperature and meter flow rate for that same date. The differential pressure test information required to be in compliance with state Public Utility Commission (PUC) requirements is available with the push of a button.

This offers operating efficiencies as the number of return trips to the meter set is reduced, and reduces the need for venting gas during periods of low consumption. Differential pressure test results are also logged in the data logs.

Developed from the proven IMCW platform, the Dresser Micro Corrector provides volume correction through a simple-to-use interface. Features such as improved low flow accuracy, enhanced data logging capability, and reduced accuracy test times combine to offer a complete solution to major customers.

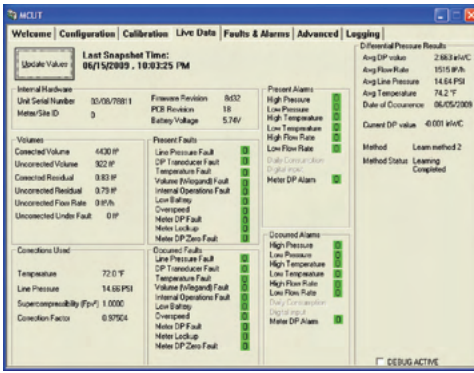
The Dresser Micro Corrector, model IMCW2, is an integral corrector rated for Division 1 hazardous locations by the Canadian Standards Association (CSA) and ATEX.

## Remote Communications

Save money by reducing the number of site visits, truck rolls and your carbon footprint with Dresser's IMCW2 Micro Corrector. With the support of AUTOSOL's ACM 8.0 and Itron's MV-90, you can remotely monitor your meter's health with real-time data delivery for a complete solution for offsite communications; ultimately saving you money every day.

## Features

- Monitors meter health
- Reduces unnecessary scheduled maintenance
- Aids in regulatory compliance of DP testing, where applicable
- Last valid DP measurement displayed on LCD and live data screen



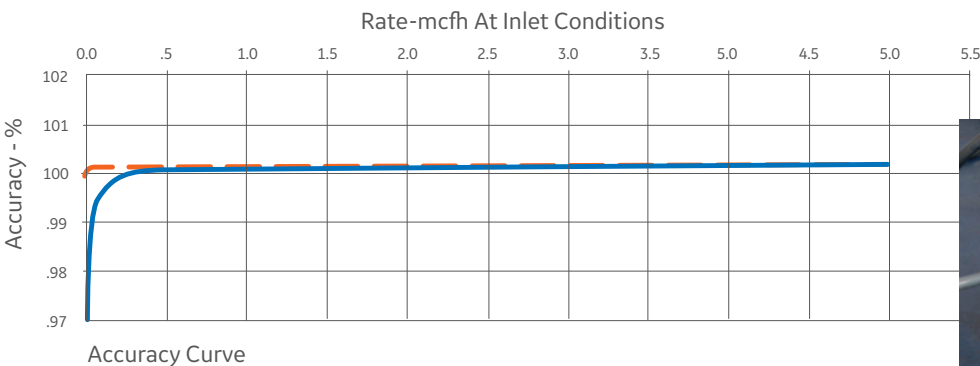
Live data screen displays current DP read, as well as last valid DP read, pressure, temperature and flow rate with date of occurrence.

## Features

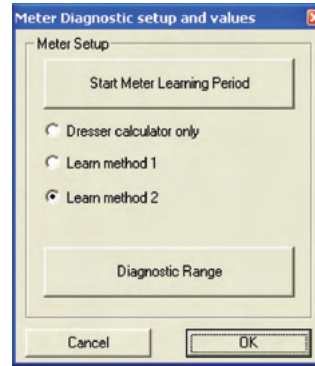
- Real-time differential pressure measurement
- Compatible with Dresser Series A (LMMA), Series B, and Romet meters
- DP measurement is independent of volume correction
- dp + LOG units feature faults for high DP and meter lock-up
- Rotating index offers ease of meter reading, especially in non-typical installations
- Uncorrected instantaneous flow rate displayed on LCD can help meter differential testing in the field
- Autosol ACM 8.0 compatibility
- Itron MV90 xi compatibility

## Maximum uncorrected peak flow also displayed on LCD

- The SmartProve<sup>®</sup> Interface reduces meter and corrector test times by as much as 90%, and allows the meter and corrector to be tested as a complete measurement system.
- User selectable trim table improves rotary meter accuracy at flow rates less than 10% of meter Q<sub>max</sub>
- User terminal software allows for configuration, calibration and data log downloads
- 1 to 3 data logs provide for years of historical information and are configurable in increments from 1 minute to 1 month; data logs include the option to log live battery voltage



Trim Table



Learning methods are customer selectable in the user terminal software.

- Audit log maintains a record of configuration and calibration changes
- Available with your choice of sealed alkaline or lithium battery pack
- Alarms notify the user of over-range conditions for pressure, temperature, and flow rate
- On units with DP transducer installed, alarms are present for higher than normal differential pressure
- Alarm and fault activity is displayed in the data log and audit log reports, and the live data screen
- E2PROM provides non-volatile storage of recorded data and corrector configuration regardless of battery condition
- Uncorrected volume under fault register in E2PROM replicates a backup mechanical index
- Microsoft Excel<sup>®</sup> formatted reports allow for manipulation and sharing of information



Dresser SmartProve Interface

## For PTZ and T versions

- All 23M – 56M high capacity meters, and high pressure meters require an external temperature probe and thermowell. The probes are available with 5 ft or 10 ft armored cables and in 2" or 8-1/2" in insertion lengths
- Thermowells are available in sizes 1/4-NPT x 2, 1-NPT x 2, 1-NPT x 4, and 1-NPT x 6; all dimensions are in inches

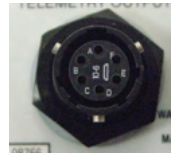
## A variety of pulse output connectors are available

- Metal 6-pin circular twist lock connectors
- Plastic cable-gland connectors
- Conduit fittings and other special connectors are available upon request

The IMCW2 will be shipped with a factory standard configuration unless the customer specifies otherwise.

A sealed battery pack is included and provides a nominal five years of reliable corrector operation.

New users will want to order the user terminal software and one or more communication cables to allow local configuration, calibration, and data retrieval. The cables are available in 6, 25, and 50 ft. lengths. Special cables are available for proving the meter and corrector with the Dresser Model-5 Transfer Prover.



Circular



Conduit Plug



Conduit with Cable



Cable Gland  
no cable



Cable Gland  
with cable

## Communication Cables

| PC (Serial) to IMC |             |
|--------------------|-------------|
| Length of Cable    | Part Number |
| 6.6'               | 057135-001  |
| 25'                | 057135-002  |
| 50'                | 057135-003  |
| PC (USB) to IMC    |             |
| 6.4'               | 059850-000  |

| Log Number        | Date       | Time        | Avg DP Value | Avg Flow Rate      | Avg Line Pressure | Avg Line Temperature |
|-------------------|------------|-------------|--------------|--------------------|-------------------|----------------------|
| Reference DP Logs |            |             | in WC        | ft <sup>3</sup> /h | PSI               | °F                   |
| 1                 | 10/12/2015 | 11:26:50 AM | 0.462        | 3755               | 8.146             | 87.13                |
| 2                 | 10/13/2015 | 9:54:50 AM  | 0.315        | 3342               | 8.153             | 85.64                |
| 3                 | 10/14/2015 | 10:26:20 AM | 0.223        | 2516               | 8.145             | 86.07                |
| 4                 | 10/15/2015 | 9:47:50 AM  | 0.300        | 3233               | 8.165             | 84.38                |
| 5                 | 10/16/2015 | 10:14:50 AM | 0.538        | 3813               | 8.150             | 84.65                |
| 6                 | 10/17/2015 | 10:20:20 AM | 0.477        | 3829               | 8.133             | 85.36                |
| 7                 | 10/18/2015 | 10:27:50 AM | 0.297        | 3211               | 8.128             | 87.09                |
| 8                 | 10/19/2015 | 9:44:50 AM  | 0.388        | 3484               | 8.143             | 84.62                |
| 9                 | 10/20/2015 | 9:43:20 AM  | 0.356        | 3470               | 8.141             | 84.34                |
| 10                | 10/21/2015 | 9:42:50 AM  | 0.427        | 3384               | 8.144             | 84.34                |
| Current DP Logs   |            |             |              |                    |                   |                      |
| 26                | 03/05/2016 | 9:49:20 AM  | 0.302        | 3599               | 8.350             | 66.12                |
| 27                | 03/06/2016 | 9:46:20 AM  | 0.357        | 3567               | 8.399             | 66.08                |
| 28                | 03/07/2016 | 10:11:50 AM | 0.265        | 3645               | 8.370             | 68.31                |
| 29                | 03/08/2016 | 9:57:20 AM  | 0.273        | 3548               | 8.345             | 67.49                |
| 30                | 03/09/2016 | 10:03:20 AM | 0.307        | 3530               | 8.347             | 67.02                |
| 31                | 03/10/2016 | 10:01:20 AM | 0.283        | 3409               | 8.395             | 68.08                |
| 32                | 03/11/2016 | 9:38:50 AM  | 0.270        | 3252               | 8.401             | 67.61                |
| 33                | 03/12/2016 | 10:17:50 AM | 0.102        | 2440               | 8.341             | 69.49                |
| 34                | 03/13/2016 | 9:52:50 AM  | 0.310        | 3683               | 8.353             | 68.04                |
| 35                | 03/14/2016 | 9:55:20 AM  | 0.285        | 3419               | 8.360             | 67.45                |
| 36                | 03/15/2016 | 10:03:20 AM | 0.289        | 3429               | 8.375             | 68.31                |

**Dresser Measurement**

16240 Port Northwest Drive  
Houston, TX 77041  
T: 1-800-521-1114  
F: 1-800-335-5224



© 2023 Natural Gas Solutions North America, LLC – All rights reserved.  
Dresser Utility Solutions reserves the right to make changes in specifications and features shown herein, or discontinue the product described at any time without notice or obligation. Contact your Dresser Utility Solutions representative for the most current information. The Dresser Logo and all Trademarks containing the term “Dresser” are the property of Dresser, LLC, a subsidiary of Baker Hughes.