



Pipe Outside Diameter Guide

IMPORTANT: This Pipe O.D. Guide is furnished for your convenience and is based on the latest pipe standards and information supplied by pipe manufacturers. Due to occasional changes and variances in outside diameters, the pipe O.D. should always be verified before ordering fittings.

SMALL DIAMETER PIPE SIZES	Nominal Pipe Size (inches)	1/2	3/4	1	1 1/4
	Copper Tubing (CTS)		0.63	0.88	1.13
Steel Pipe – Schedule 40		0.84	1.05	1.32	1.66
Plastic Pipe – (PVC) – STD				1.32	
Polythylene Pipe IPS			1.05	1.32	1.66

STANDARD PRESSURE PIPE SIZES	Nominal Pipe Size (inches)	1 1/2	2	2 1/2	3	4	5	6	8	10	12	14	15	16	18	20	24	30	36	42	48	54	60	
	Copper Tubing (CTS)		1.63	2.13	2.63	3.13	4.13	5.13	6.13															
Steel		1.90	2.38	2.88	3.50	4.50	5.56	6.63	8.63	10.75	12.75	14.00		16.00	18.00	20.00	24.00	30.00	36.00	42.00	48.00	54.00	60.00	
Plastic Pipe – (PVC) – STD		1.90	2.38	2.88	3.50	4.50		6.63	8.63	10.75	12.75	14.00		16.00	18.00	20.0	24.0	30.0	36.00					
Plastic (PVC) C-900/C-905/C-909						4.80		6.90	9.05	11.10	13.20	15.30		17.40	19.50	21.60	25.80	32.00	38.30	44.50	50.80			
PVC Sewer Pipe						4.22	5.64	6.28	8.4	10.50	12.50		15.30		18.70		24.80							
Polythylene Pipe IPS		1.90	2.38		3.50	4.50	5.56	6.63	8.63	10.75	12.75	14.00		16.00	18.00	20.0	24.0	30.00	36.00	42.00	48.00			
Polythylene Pipe DI Size						4.80		6.90	9.05	11.10	13.20			17.40	19.50	21.60	25.80		38.30	44.50	50.80			
Plastic Irrigation						4.13		6.14	8.16	10.20	12.24			15.30	18.70		24.80							

PE Tubing can be CTS

CAST IRON PIPE	Nominal Pipe Size (inches)	1 1/2	2	2 1/2	3	4	5	6	8	10	12	14	15	16	18	20	24	30	36	42	48	54	60
	DUCTILE IRON PIPE					3.96	4.80		6.90	9.05	11.10	13.20	15.30		17.40	19.50	21.60	25.80	32.00	38.30	44.50	50.80	57.10
Class 100-250 AWWA Centrifugally Cast					3.96	4.80		6.90	9.05	11.10	13.20	15.30		17.40	19.50	21.60	25.80	32.00	38.30	44.50	50.80		
Class A AWWA Pit Cast			2.50		3.80	4.80		6.90	9.05	11.10	13.20	15.30		17.40	19.50	21.60	25.80	31.74	37.96	44.20	50.50	56.66	62.80
Class B AWWA Pit Cast					3.96	5.00		7.10	9.05	11.10	13.20	15.30		17.40	19.50	21.60	25.80	32.00	38.30	44.50	50.80	57.10	63.40
Class C AWWA Pit Cast					3.96	5.00		7.10	9.30	11.40	13.50	15.65		17.80	19.92	22.06	26.32	32.40	38.70	45.10	51.40	57.80	64.20
Class D AWWA Pit Cast					3.96	5.00		7.10	9.30	11.40	13.50	15.65		17.80	19.92	22.06	26.32	32.74	39.16	45.58	51.98	58.40	64.82
Soil Pipe			2.30		3.30	4.30	5.30	6.30	8.40	10.50	12.50		15.62										



TX3® Couplings



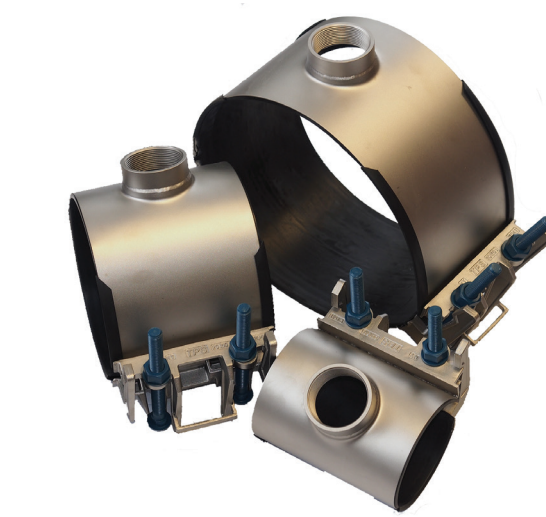
Quick-Cam® Repair Clamp



Ultra-Sleeve®



Triple Tap® Tapping Sleeves and Line Stop Fittings



T3® Service Saddles

CLASS 100	Nominal Pipe Size (inches)	1 1/2	2	2 1/2	3	4	5	6	8	10	12	14	15	16	18	20	24	30
	Machined End					3.74	4.64		6.91	9.11	11.24*	13.44*	15.07		17.15	19.90	22.12	26.48
Fluid-Tite Rough Barrel					3.93	5.05		7.16	9.32	11.46	13.70	15.36		17.50				
Flintite Rough Barrel					3.94	4.90		7.13	9.33	11.30	13.42	15.45		17.60				
Ring-Tite Rough Barrel					3.95	4.92		7.19	9.39	11.47	13.74	15.51		17.65	20.44	22.68	27.12	33.80
Permafex Rough Barrel						4.84		7.15	9.35	11.47	13.74	15.55		17.55				
Minimum Standard Rough Barrel						4.79		7.05	9.22	11.25	13.37	15.36		17.50	20.44	22.50	27.17	
Maximum Standard Rough Barrel						5.26		7.40	9.57	11.77	14.04	15.80		17.94				

CLASS 150	Nominal Pipe Size (inches)	1 1/2	2	2 1/2	3	4	5	6	8	10	12	14	15	16	18	20	24	30
	Machined End					3.84	4.81		6.91	9.11	11.66	13.92	16.22		18.46	20.94	23.28	27.96
Fluid-Tite Rough Barrel					4.03	5.14		7.12	9.32	11.85	14.11	16.41		18.65				
Flintite Rough Barrel					4.04	5.01		7.13	9.33	11.88	14.14	16.48		18.72				
Ring-Tite Rough Barrel					4.13	5.07		7.17	9.37	11.92	14.18	16.48		18.72	21.30	23.64	28.32	35.42
Permafex Rough Barrel						5.00		7.20	9.40	11.92	14.20	16.50		18.75				
Minimum Standard Rough Barrel						4.97		7.07	9.27	11.82	14.08	16.38		18.62	21.20	23.54	28.22	
Maximum Standard Rough Barrel						5.32		7.37	9.62	12.12	14.38	16.73		18.97				

CLASS 200	Nominal Pipe Size (inches)	1 1/2	2	2 1/2	3	4	5	6	8	10	12	14	15	16	18	20	24	30
	Machined End					3.84	4.81		6.91	9.11	11.66	13.92	16.22		18.46	22.18	24.66	29.62
Fluid-Tite Rough Barrel					4.18	5.32		7.36	9.46	11.88	14.11	16.44		18.74				
Flintite Rough Barrel					4.17	5.32		7.26	9.44	11.88	14.14	16.53		18.84				
Ring-Tite Rough Barrel					4.17	5.33		7.32	9.50	11.92	14.18	16.55		18.90	22.54	25.02	29.98	37.48
Permafex Rough Barrel						5.32		7.26	9.50	11.95	14.20	16.55		18.90				
Minimum Standard Rough Barrel						5.22		7.26	9.39	11.77	14.03	16.44		18.74				
Maximum Standard Rough Barrel						5.57		7.60	9.79	12.12	14.38	16.88		19.19				

*Flintite ME is 10.89 for 10" and 12.99 for 12" sizes



Dresser Pipeline Solutions
 1760 Haskell Road
 Olean, NY 14760
 P: 716-372-0180
 F: 716-372-1767
www.dresserutility.com/water