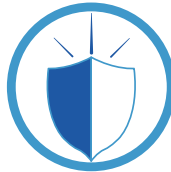




Pipe Joining & Repair Products



**Up To
275 PSI
Pressure**



**High
Strength
Materials**



**Reduce
Time
On Job**



TPS TX3® Wide Range Transition Coupling

- » 2" – 24" Nominal Diameters available in Standard or Long Body Versions
- » Universal Design: Up to 1.3" of Range Minimum of 3 Pipe Classes
- » Integrated Easy-Lift Handle
- » Stainless Steel imperial sized hardware
- » Up to 275 psi Working Pressure



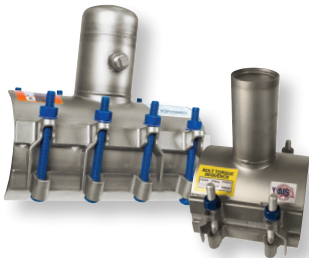
TPS Quick-Cam® Wide Range Repair Clamp

- » 2" – 54" Stainless Steel Bands with Stainless Steel or Ductile Iron Lugs
- » Large diameter Emergency Repair Kits Available
- » Integrated closure handle 0.8" EXT Range of fit
- » CC and NPT Outlets Available
- » Up to 200 psi Working Pressure
- » Temperatures up to 180°F



TPS Ultra-Sleeve® Leak Encapsulation Repair Sleeve

- » 2" – 12" covers IPS, CIP, DIP, AC, PVC, HDPE with one sleeve per nominal size
- » 14" – 30" Fabricated Carbon Steel with Stainless Steel hardware
- » Easy to reach starter bolts with no need to shut down the water main for quick installation
- » Encapsulates leaking bell & spigots, clamps, collars and couplings
- » Up to 200 psi Working Pressure
- » Temperatures up to 80°F



TPS Abandoned Corp Stop Fitting

- » 4" - 48" diameters available in 9" and 15" wide version
- » Designed to encapsulate common corporation stop valve sizes
- » Heavy Stainless Steel Shell
- » 250 psi Working Pressure
- » Temperatures up to 180°F



Flange Adapters & Dismantling Joints

- » Available in sizes 2" – 120" with AWWA CL D flanges standard (optional Class E & F)
- » Fabricated from high-strength steel or stainless steel upon request
- » 5" Longitudinal adjustment
- » Optional thrust restraint rods available
- » Custom fabrications available for compact or extended adjustments

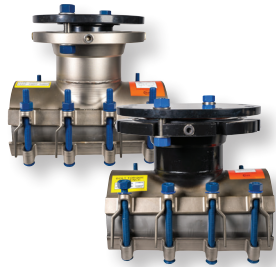
Pipe Tapping & Line Stop Fittings

TPS Triple Tap® Tapping Sleeves



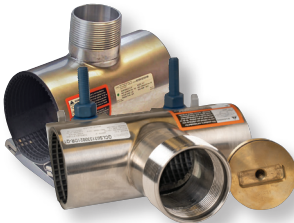
- » 4" – 48" Nominal Size Range
- » Stainless Steel Tapping Sleeve with branch sizes up to 24" — Carbon steel flange available upon request
- » MJ Tapping Sleeve Branch Sizes up to 16"
- » 360° Sealing surface to protect against beam break during size-on-size taps
- » Up to 250 psi Working Pressure
- » Temperatures up to 180°F
- » Range of fit up to 0.9" per fitting for use on PVC, HDPE, Steel, or AC pipe sizes

TPS Triple Tap® Line Stop Fittings



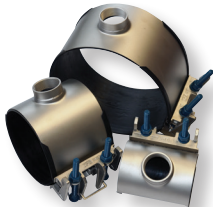
- » 4" – 24" Nominal Size Range
- » Push plug or threaded completion plug available
- » Type-H flange available upon request
- » Stainless Steel Line Stop with branch sizes up to 16" with optional carbon steel flange
- » Call factory for larger branch connections
- » Up to 250 psi Working Pressure
- » Temperatures up to 180°F
- » Range of fit up to 0.9" per fitting for use on PVC, HDPE, DIP, CIP, Steel, or AC pipe sizes

TPS Quick-Cam® Hot Tapping & Line Stop Saddles



- » ¾" – 4" Nominal Size in CTS or IPS
- » Stainless steel saddle construction
- » Call factory for special sizes
- » Up to 150 psi Max Working Pressure
- » NBR Gasket Temperatures up to 180°F
- » EPDM Gasket Temperatures up to 220°F

TPS T3® Service Saddle



- » 4" – 48" Nominal Size Range
- » Stainless steel saddle construction
- » Isolation Boot to prevent Bi-Metallic Corrosion
- » One saddle covers DIP, CIP, PVC, HDPE, AC Pipe per nominal size
- » 4" – 16" Nominal Up to 250 psi
- » 18" – 24" Nominal Up to 200 psi
- » 42" – 48" Nominal Up to 125 psi
- » Temperatures up to 180°F

Other Dresser Piping Products



- » Large Diameter couplings 24" – 120"+
- » Style 39-W Insulating coupling for electrical isolation
- » Style 63 Slip Pipe Expansion Joints
- » Style 65 Compression Fittings ½" – 2" IPS and CTS sizes available
- » Handiband Clamp ½" – 8" IPS and CTC sizes available in 3, 6, 12" widths



Dresser Pipeline Solutions
1760 Haskell Road
Olean, NY 14760
P: 716-372-0160
F: 716-372-1767
www.dresserutility.com/water

