

SRV 811R

Safety Relief Valve



The SRV 811R relief valve is installed downstream of pressure regulators to relieve limited volumes of gas. Used where venting to the atmosphere is acceptable, it provides a cost-effective solution to prevent safety shut-off valves from triggering in case of creep leaks from regulators. This valve is design for indoor installation and is ideal for low and medium pressure settings.

Key Benefits

- » Compact design
- » Accurate operation
- » High flow capacity
- » Easy maintenance
- » Reliable
- » Tight shut-off

Description

The SRV 811R relief valve is a springloaded throttling relief valve, where a diaphragm measures the system (inlet) pressure, a spring provides the initial load to the diaphragm and establishes the relief set point, and a valve throttles the relief flow.

Technical Specifications

Maximum relief (inlet) pressure	1 bar
Relief set pressure range	30 - 650 mbar
Operating temperature	-20°C to +60°C
Acceptable gases	Natural gas, town gas, propane, butane, air, nitrogen or any non-corrosive gas

Sizes & Connections

Sizes pressure	DN 20
Type	Gas female threaded

Materials

Body-Casing-Cover	Spheroidal graphite cast iron SFP 50
Valve	Nitrile Rubber
Diaphragm	Rubber, fabric reinforced
Internal Parts	Brass and Stainless Steel

Flow Capacity

Relief Set Pressure (mbar)	Buildup Over Relief Pressure Setting (mbar)	Capacity at Standard Conditions (m3/h)
64	6.5	22
64	13	38

Standard conditions:

- » Absolute pressure of 1.013 bar
- » Temperature of 15°C

The flow rates are indicated for a 0.6 specific gravity gas

SRV Spring Selection Tables

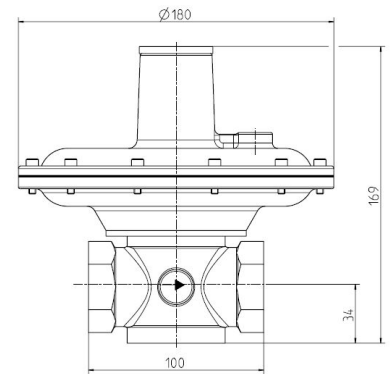
SRV	Spring Code	Spring Characteristic				Wu (bar)	Maximum Available Relief (inlet) Pressure bar
		d	De	Lo	Lt		
811R	20564036	4	30	70	4.5	30 ÷ 450	1.0
	20564027	4.5	30	55	4.5	350 ÷ 650	1.0

Note: Accuracy at the initial leak point, at which the relief valve begins to discharge, is in the range of ± 5% of the setting.

Spring characteristics:

d: wire diameter Lo: height
 De: external diameter Lt: no. of spires

Overall Dimensions (mm)



Type SRV 811R Weight 1.7 kg

Information to be specified when ordering:

- » Model
- » Inlet pressure
- » Relief pressure range
- » Connection type
- » Maximum flow rate
- » Kind of gas
- » Quantity required

Dresser Utility Solutions GmbH

Hardeckstr 2,
 76185 Karlsruhe
 T: +49 (0)721 / 5981 - 100
 F: +49 (0)721 / 5981 - 282

© 2022 Natural Gas Solutions North America, LLC – All rights reserved. Dresser Utility Solutions reserves the right to make changes in specifications and features shown herein, or discontinue the product described at any time without notice or obligation. Contact your Dresser Utility Solutions representative for the most current information. The Dresser Logo and all Trademarks containing the term "Dresser" are the property of Dresser, LLC, a subsidiary of Baker Hughes.

