

# SRV 811R

## Safety Relief Valve



The SRV 811R relief valve is installed downstream of pressure regulators to relieve limited volumes of gas. Used where venting to the atmosphere is acceptable, it provides a cost-effective solution to prevent safety shut-off valves from triggering in case of creep leaks from regulators. This valve is design for indoor installation and is ideal for low and medium pressure settings.

### Key Benefits

- » Compact design
- » Accurate operation
- » High flow capacity
- » Easy maintenance
- » Reliable
- » Tight shut-off

### Description

The SRV 811R relief valve is a springloaded throttling relief valve, where a diaphragm measures the system (inlet) pressure, a spring provides the initial load to the diaphragm and establishes the relief set point, and a valve throttles the relief flow.

### Technical Specifications

|  |  |
|--|--|
| <b>Maximum relief (inlet) pressure</b> | 1 bar  |
| <b>Relief set pressure range</b>       | 30 - 650 mbar  |
| <b>Operating temperature</b>           | -20°C to +60°C   |
| <b>Acceptable gases</b>                | Natural gas, town gas, propane, butane, air, nitrogen or any non-corrosive gas |

### Sizes & Connections

|                       |                     |
|-----------------------|---------------------|
| <b>Sizes pressure</b> | DN 20               |
| <b>Type</b>           | Gas female threaded |

### Materials

|                          |                                      |
|--------------------------|--------------------------------------|
| <b>Body-Casing-Cover</b> | Spheroidal graphite cast iron SFP 50 |
| <b>Valve</b>             | Nitrile Rubber                       |
| <b>Diaphragm</b>         | Rubber, fabric reinforced            |
| <b>Internal Parts</b>    | Brass and Stainless Steel            |

## Flow Capacity

| Relief Set Pressure (mbar) | Buildup Over Relief Pressure Setting (mbar) | Capacity at Standard Conditions (m3/h) |
|----------------------------|---|--|
| 64                         | 6.5   | 22                                     |
| 64                         | 13  | 38                                     |

## SRV Spring Selection Tables

| SRV  | Spring Code | Spring Characteristic |    |    |     | Wu (mbar) | Maximum Available Relief (inlet) Pressure bar |
|------|-------------|-----------------------|----|----|-----|-----------|---|
|      |             | d                     | De | Lo | Lt  |           |   |
| 811R | 20564036    | 4                     | 30 | 70 | 4.5 | 30 ÷ 450  | 1.0   |
|      | 20564027    | 4.5                   | 30 | 55 | 4.5 | 350 ÷ 650 | 1.0   |

Note: Accuracy at the initial leak point, at which the relief valve begins to discharge, is in the range of ± 5% of the setting.

### Standard conditions:

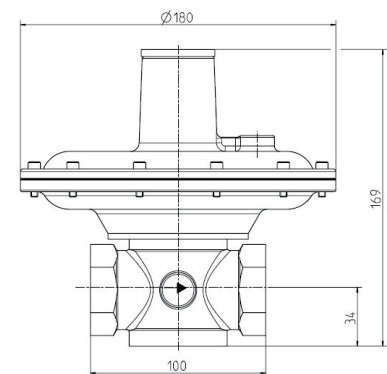
- » Absolute pressure of 1.013 bar
- » Temperature of 15°C

The flow rates are indicated for a 0.6 specific gravity gas

### Spring characteristics:

- d: wire diameter
- De: external diameter
- Lo: height
- Lt: no. of spires

## Overall Dimensions (mm)



Type SRV 811R Weight 1.7 kg

### Information to be specified when ordering:

- » Model
- » Inlet pressure
- » Relief pressure range
- » Connection type
- » Maximum flow rate
- » Kind of gas
- » Quantity required

## Dresser Utility Solutions GmbH

Hardeckstr. 2  
76185 Karlsruhe  
T: +49 (0)721 / 5981 - 100  
info.karlsruhe@dresserutility.com



© 2024 Dresser Utility Solutions GmbH – All rights reserved. Dresser Utility Solutions reserves the right to make changes in specifications and features shown herein, or discontinue the product described at any time without notice or obligation. Contact your Dresser Utility Solutions representative for the most current information. The Dresser Logo and all Trademarks containing the term "Dresser" are the property of Dresser, LLC, a subsidiary of Baker Hughes. Actaris™ is a trademark owned by Itron, Inc. and used under license.