

SERus

Residential Regulator



The SERus and SERus E residential regulators are based on a spring-loaded measuring unit. This type of regulator is used for direct pressure regulation at the inlet of residential and industrial gas meters.

Key Benefits

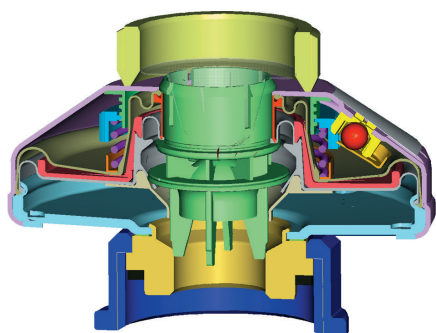
- » Compact design
- » Pre-set outlet pressure
- » Fireproof up to 650°C
- » Regulating diaphragm and safety diaphragm with breathing hole
- » DVGW approved, DVGW Reg. No: DG-4330CL0421

Option

- » Gas loss protection GMS (activation on ca. 50% p_{ds}, distance piece, high temp. load (HTL) resistance)

Description

The innovative design based on the axial flow principle generates a high flow rate despite the regulator's small dimensions. Regulator produced according DIN33822 requirement including materials, mechanical strength, fire proof and other. A 320 µm micro strainer protects the regulator on the inlet side.



Technical Specifications

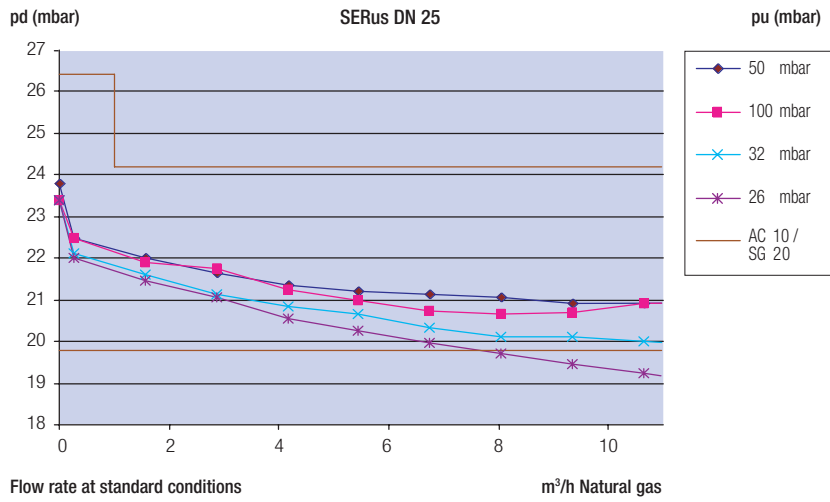
Pressure rate	PN 0.1 (PN 0.2)
Inlet pressure range	p _d + 4 to 100 (200) mbar
Outlet pressure range	20 to 33 mbar (pre-set)
Orifice diameter	28 mm
Regulation group	AC 10
Closing pressure group	SG 20
Fluid	All gases according to EN ISO 13686:2013 / DVGW Work Sheet G 260
Flow rate	Suitable for G 2.5 to G 16
Connection size	DN 20, DN 25, DN 32 and DN 40, Single pipe DN 25
Connection type	Pipe screw joint acc. ISO 228/1 (G1", G 1¼", G1¾" and G2")

Materials

Housing	Sheet metal, zinc protected
Connection parts	Steel, zinc protected
Diaphragm	NBR
Internal parts	Steel, Brass, Aluminium, POM-plastic
Dimension	70 mm x Ø 87 mm (Single pipe DN 25)
Weight	max. 0.5 kg

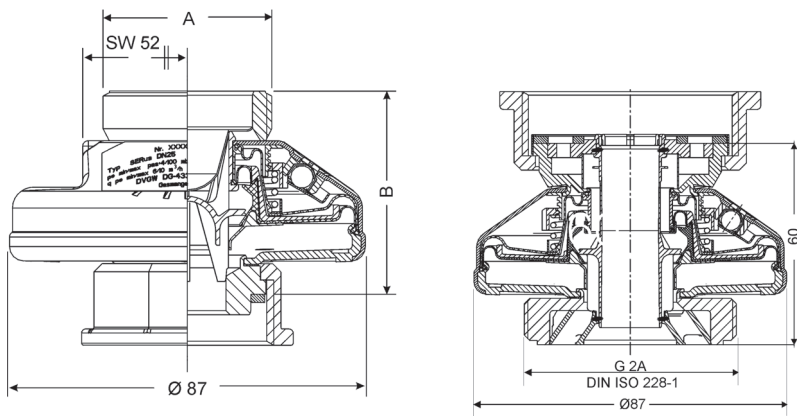
* Standard outlet pressure setting p_{ds} = 22 (23) mbar

Typical Performance Curve



Flow rates / Dimensions / Weights

Type	Connection Size	Gas meter	Connection Thread A	Installation Length B [mm]	Flow rate Qmax [Sm³/h Natural gas] for pd +... [mbar]				Weight [kg]
					G 4	G 6	G 10	G 16	
SERus	DN20	G4	G1	50	+4	-	-	-	0.4
	DN25	G4/G6	G1¼	50	+4	+10	-	-	0.4
	DN32	G6/G10	G1¾	50	+4	+10	+20	+33	0.5
	DN40	G10/G16	G2	55	+4	-	+14	+26	0.5
SERus E	DN25	G4/G6	G2	60	+4	+10	-	-	0.5



Operating instructions

Installation:

Before assembling your SERus gas pressure regulator, remove the protective caps (if present). The SERus regulator must be installed without pipe braces. The arrow located on the SERus housing indicates the flow direction. Use a spanner measuring 52 mm across the flats*) as a counter hold. The use of pipe wrenches is not allowed. After installing, assure that there are no leaks. Install, inspect and monitor the regulator as outlined in the DVGW worksheets G495/II and G600 and in accordance with the UV regulations. Operating temperature range -20°C to +60°C.

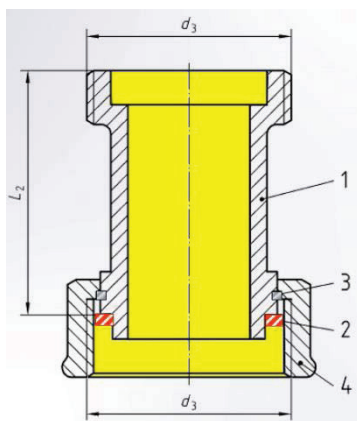
Commissioning:

Open the inlet tap slowly. The gas flows into the SERus regulator and turns it to its closing pressure position. After opening the outlet tap the regulated gas flow is directed to the consumption unit. If the SERus regulator is fitted with an integrated gas loss protection, the gas will flow to the user only after the gas loss protection has been opened. This happens automatically if the outlet tap is closed and gas pressure comes in (the inlet tap is open). After approximately 20 to 100 seconds the gas loss protection opens thus bringing the SERus governor into its closing pressure position. As a result, the outlet tap opens.

Accessories

Distance Piece

- » According to DIN 33822:2017
- » Connection thread: same as regulator
- » Material: Steel, Malleable iron
- » Fireproof / High Temp Load (HTB) resistance
- » Surface protection: Zinc coated and/or KTL



1. Distance Piece
2. Gasket
3. Snap ring
4. Union nut

Dimensions Distance Piece

DN	Connection D ₃	Length L ₂ (mm)
20	G1"	50
25	G1¼"	50
32	G1¾"	50
40	G2"	55
50	G2½"	60

Dresser Utility Solutions GmbH

Hardeckstr. 2
76185 Karlsruhe
T: +49 (0)721 / 5981 - 100
info.karlsruhe@dresserutility.com



© 2024 Dresser Utility Solutions GmbH – All rights reserved. Dresser Utility Solutions reserves the right to make changes in specifications and features shown herein, or discontinue the product described at any time without notice or obligation. Contact your Dresser Utility Solutions representative for the most current information. The Dresser Logo and all Trademarks containing the term "Dresser" are the property of Dresser, LLC, a subsidiary of Baker Hughes. Actaris™ is a trademark owned by Itron, Inc. and used under license.