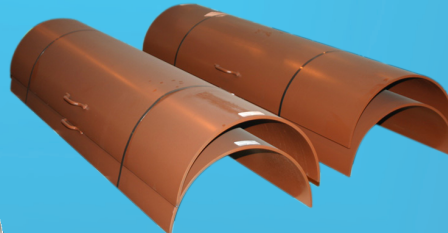


Integrity, Repair & Reinforcement Pipeline Transmission Products



Blackhawk Pressure Control Fittings



115 Split Sleeve



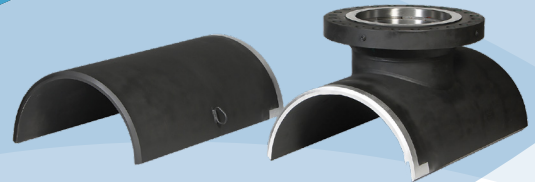
Dresser Style 110
Girth Weld Reinforcement Sleeve
(4" - 30")



Dresser Style 220
Reinforcing "Pumpkin" Sleeve
(2" - 26")



Dresser Style 96 Split Repair Sleeve
Expanded body split sleeve for repairs on
steel pipe sizes 6" thru 30"



Blackhawk Pressure Control Fittings



Dresser engineering expertise offers pipeline engineers a one-stop source for a variety of transmission pipeline repairs and reinforcement solutions.

Weldable Style 110 and 220 reinforcing sleeves can be used on defective 'trouble spots' on piping systems at highway, river and railroad crossings; at overbends; at tie-ins; in marshy ground; near buildings; and other areas where special precautions are necessary.



Featuring two split-half sleeve components, Dresser repair and reinforcing sleeves offer fast installation and permanent repair of defective trouble spots on steel transmission pipelines.

The two-piece Style 110 and 220 sleeves offer quick field welding without preheating, using ordinary field welding procedures. All sleeves are factory prepared with standard welding bevel, machine flame-cut for uniformity and ease of welding, and come with a drilled vent hole to preclude pressure build-up between sleeve and pipe.

Style 220* sleeves encompass a "pumpkin" design and are commonly used to repair corrosion pits and stress cracks while offering a permanent repair over leaking coupled joints, flanges and valves.

*Style 220 available in custom low-profile options

Style 110 & 220 Features:

Lighter Sleeves

- Easier to transfer and handle at the job site
- Factory-welded handles facilitate accurate alignment when welding the sleeve halves onto the pipeline

Labor Reduction

- Fewer components reduces installation time
- Fewer welds mean less field-welding time and fewer welding materials required (weld rod, gas, etc.)

Faster, Easier Installation and Higher Productivity

- Fast installation increases productivity; Crews tripled sleeves installed per day versus Type B Over-sleeve design
- Significant reduction in overall project costs
- Fabricated to meet all DOT specifications for weld-over sleeves for steel pipeline applications

Style 115 Reinforcing Sleeves

Where special precautions are needed, you can strengthen field joints by installing Dresser Style 115 reinforcing sleeves. The Style 115 is a full-wrap split sleeve and can be fabricated to any length required. Style 115's are factory-prepared with standard welding bevel and are machine flame-cut for uniformity and ease of installation.

Style 96 Emergency Mechanical Repair Sleeve

Dresser Style 96 Split Repair Sleeves offer an expanded body for repairing longitudinal breaks up to eight inches, circumferential breaks, broken and porous welds, corrosion leaks, and coupled or mechanical joints on high pressure steel transmission piping systems. Style 96 sleeves are fabricated from high-quality carbon steel or manufactured from cast steel, and come completely factory-assembled for quick installation. Sleeves are also vented for installation under pressure.

BLACKHAWK Pressure Control Fittings

Dresser full-circle line stop fittings are available in ANSI 150, 300, 600 and 900 from 4" through 48" sizes. Fittings can be manufactured with side outlet, spherical configurations or with standard weld neck flange for hot tapping applications.

Dresser split sleeve fittings are compatible with industry standard tapping and plugging equipment. All fittings are designed and certified to ASME/ANSI B31.8 DOT 192 Federal regulations for gas pipelines. All split sleeve fittings are welded in accordance with ASME Section IX or API 1104 welding procedures.

Full Encirclement Line Stop Fittings

- 4" thru 48"
- ANSI 150 (PN20)
- ANSI 300 (PN50)
- ANSI 600 (PN100)

Line Stop Flanges

- 4" thru 36"
- ANSI 150, 300 & 600

Line Stop Completion Plugs

- 4" thru 48"
- ANSI 150, 300 & 600

Line Stop Reducing Branch Fittings

- ANSI Class 600

Pressure Control Fittings for Steel Pipe

- Split sleeve, weld & spherical configurations
- 4" thru 12" with flange outlet

LS-2 150 Series to 285 PSI:

- Weld Fittings
(1-1/4" thru 3" with threaded outlet available)
- Weld Fittings w/Side Outlet
- Spherical Weld Fittings

LS-2 300 Series to 740 PSI:

- Split Sleeve Fittings
- Split Sleeve Fittings w/Side Outlet
- Spherical Fittings

LS-2 Completion Plugs 285/740 PSI:

- (1-1/4" thru 3" spare O-rings)

Dresser™ Pipeline Solutions

41 Fisher Avenue
Bradford, PA 16701
T: 814.362.9200
F: 814.362.9344

© 2020 Natural Gas Solutions North America, LLC – All rights reserved.
Natural Gas Solutions reserves the right to make changes in specifications and features shown herein, or discontinue the product described at any time without notice or obligation. Contact your Dresser Natural Gas Solutions representative for the most current information.

The Dresser Logo and all Trademarks containing the term "Dresser" are the property of Dresser, LLC, a subsidiary of Baker Hughes, a GE Company.



www.dresserngs.com