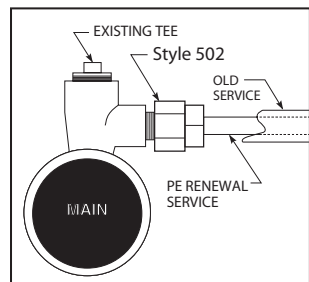


## INSTALLATION INSTRUCTION 0001-0792-999

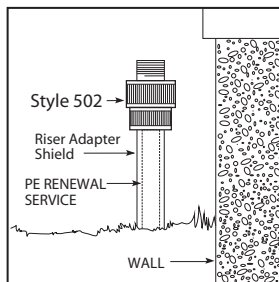
# Style 502 Service Head Adapter

### WHEN USED AS A MALE ADAPTER

1. Apply pipe dope to the male pipe thread of the Service Head Adapter and tighten in curb valve or other fitting.
2. Cut plastic tubing square & deburr. Tubing must be clean and free of longitudinal scratches for a distance of 4" from the tubing end.
3. Mark tubing for stab depth: 2-3/8" for 5/8" O.D.; 2-5/8" for 1-1/8" O.D.; 2-3/4" for 1-3/8" O.D.
4. Check stiffener to assure it is for wall thickness of tubing being used (See Color Code chart below).
5. Install stiffener in the tubing until flange of insert is flush with end of tubing.
6. Make sure fitting nut is 1/4" to 5/16" from body contact. Disassembly not required.
7. Stab tubing into fitting until it bottoms or the stab marking is inside or not over 3/8" from the untightened nut. **STABBING NOTE:** This fitting does not grip when the tubing is stabbed. If difficulty is encountered in stabbing, withdraw the tubing & try reinserting again. (Be sure nut is at least 1/4" from body.) After proper stabbing is determined, the nut must be hand tightened to actuate the grip ring for holding the tubing in place during final tightening.
8. Hold body with a pipe wrench & tighten the nut until the nut & body contact each other (Approximately 100 ft./lbs. torque).
9. Check stabbing mark on tubing. If mark is over 11/16" from the tightened nut, the fitting must be disassembled. After disassembly, check to see if stab mark length was correct. In reassembly an improperly stabbed fitting, cut off the tubing to eliminate the gripper teeth marks, reassemble parts in proper order (See drawing on other side), remark tubing, and then repeat the connection procedure.



MALE ADAPTER



RISER ADAPTER

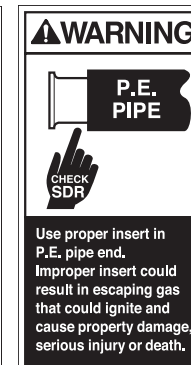
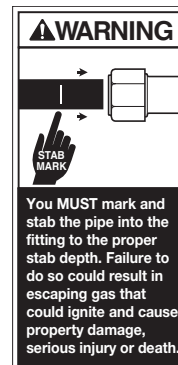
### COLOR CODE CHART

Tubing Wall (Any Diameter)	Stiffener Color
.062	Red
.077	Blue
.090	Silver
.099/.101/.103	Gold
.121	Black

### WHEN USED AS A RISER ADAPTER - With Pipe Stop

1. Install plastic tubing through riser pipe leaving approximately 12" of tubing exposed beyond the top of the riser.
2. Cut tubing square and deburr. Tubing must be clean and free of longitudinal scratches for a distance of 4" from the tubing end.
3. **IMPORTANT:** Install riser adapter at the riser BEFORE making up the curb valve or main connection.
4. Check stiffener to assure it is for the wall thickness of tubing used. (See Color Code chart below)
5. Install stiffener in the tubing until flange of insert is flush with end of tubing.
6. Apply pipe dope to meter riser threads.
7. Make sure fitting nut is 1/4" to 5/16" from body contact. Disassembly not required.
8. While holding the plastic tubing, near the riser, stab the adapter fitting over the tubing until the stiffener contacts the stop in the fitting. A slight rotation motion will facilitate insertion of the tubing.
9. Push the adapter fitting down to the steel riser pipe and tighten the fitting nut. Be careful to tighten only the adapter nut while allowing the body to rotate freely.
10. Hold nut with a pipe wrench and tighten the body until the nut and body contact each other (Approximately 100 ft./lbs. torque).
11. Apply pipe dope to the male pipe thread of the Service Head Adapter. Hold the fitting with a pipe wrench and install valve or other meter set fittings.

NOTE: When connection at the meter riser is the last connection made (curb valve or main connection made before riser connection), cut tubing exposed out of riser 2"-3" beyond the riser. Exposed tubing must be clean and free of longitudinal scratches. Follow Steps 5, 6, 7, 8, 9 & 10 as outlined above; to ensure proper installation, distance from end of fitting to the tubing stiffener should not exceed 5/8".



**Dresser™ Pipeline Solutions**  
 41 Fisher Avenue  
 Bradford, PA 16701  
 P: 814.362.9200  
 F: 814.362.9344  
[www.dresserngs.com](http://www.dresserngs.com)

© 2018 Natural Gas Solutions North America, LLC. The Dresser Logo and all Trademarks containing the term "Dresser" are the property Dresser, LLC, a subsidiary of Baker Hughes, a GE Company.

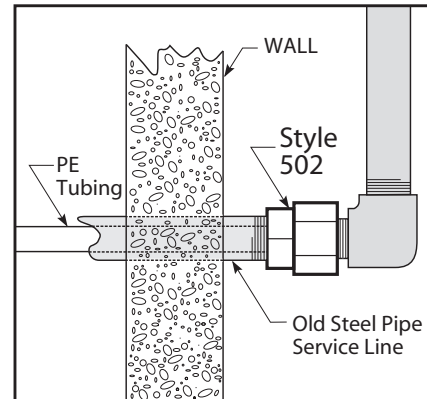
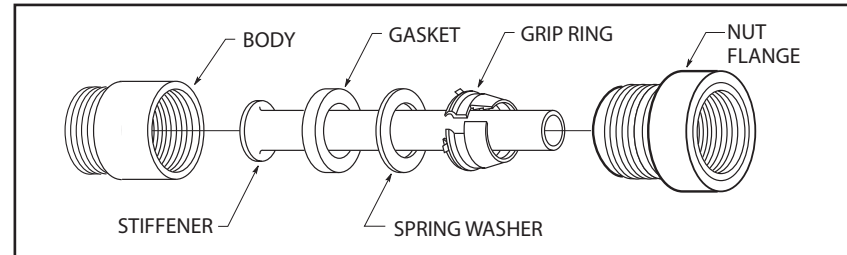
Part No. 0001-0792-999  
 11.2018

## INSTALLATION INSTRUCTION 0001-0792-999

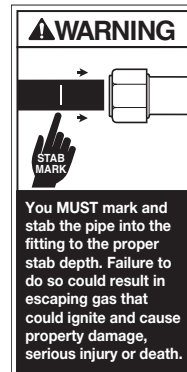
# Style 502 Service Head Adapter

### WHEN USED AS A SERVICE HEAD ADAPTER

1. Remove existing fitting(s) from old service.
2. Install plastic tubing through old steel service line from inside the basement or from the street side. Leave approximately 12" of tubing exposed beyond the old service in the basement.
3. Cut tubing square & deburr. Tubing must be clean & free of longitudinal scratches for a distance of 4" from the tubing end.
4. **IMPORTANT:** Install Service Head Adapter in the basement before making-up the curb valve or main connection.
5. Check stiffener to assure it is for wall thickness of tubing used (See Color Code chart at right).
6. Install stiffener in tubing until flange of insert is flush with the end of tubing.
7. Apply pipe dope to old service threads.
8. Make sure fitting nut is 1/4" to 5/16" from body contact. Disassembly not required.
9. While holding the plastic tubing, near the old service line, stab the Service Head Adapter over the tubing until the stiffener contacts the stop in the fitting. A slight rotating motion will facilitate insertion of the tubing.
10. Push the Service Head Adapter up to the old service line, this will force excess tubing to the street side, and tighten only the adapter nut while allowing the body to rotate freely.
11. Hold nut with a pipe wrench and tighten the body until the nut and body contact each other (Approximately 100 ft./lbs. torque).
12. Apply pipe dope to the male pipe thread of the Service Head Adapter. Hold the fitting with a pipe wrench and assemble the other service line fittings.



COLOR CODE CHART	
Tubing Wall (Any Diameter)	Stiffener Color
.062	Red
.077	Blue
.090	Silver
.099/.101/.103	Gold
.121	Black



#### Dresser™ Pipeline Solutions

41 Fisher Avenue  
Bradford, PA 16701  
P: 814.362.9200  
F: 814.362.9344  
www.dresserngs.com

© 2018 Natural Gas Solutions North America, LLC. The Dresser Logo and all Trademarks containing the term "Dresser" are the property Dresser, LLC, a subsidiary of Baker Hughes, a GE Company.