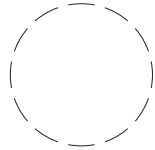
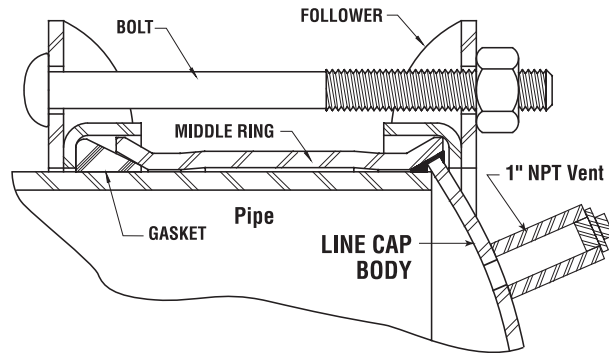


INSTALLATION INSTRUCTION 0001-0736-999



NOTE: THIS PRODUCT PROVIDES A PRESSURE **SEAL ONLY!**

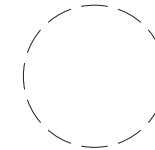
Style 31 Line Cap



- (1) Clean all dirt, rust, oil or loose scale from pipe end. Check surfaces where gasket contacts the pipe to ensure there are no imperfections such as gouges or grooves that will impair performance of the gasket seal.
- (2) Slide follower over pipe end.
- (3) Wipe gasket clean and lubricate the gasket, pipe O.D. and line cap body flare with soapy water or non-petroleum base lubricant. (antifreeze may be added to soapy water in freezing weather).
- (4) Slide gasket over pipe end and assemble line cap body on pipe end as far as it will go (head should contact end of pipe).
- (5) Move follower ring and gasket into contact with body, and line up bolt holes with other follower on line cap body.
- (6) Insert bolts and tighten nuts, drawing up the follower evenly, until bolts have been tightened to recommended torque. (See chart on back)

Part No. 0001-0736-999
10.2018

INSTALLATION INSTRUCTION 0001-0736-999



NOTE: THIS PRODUCT PROVIDES A PRESSURE **SEAL ONLY!**

Style 31 Line Cap

LINE CAP Nom. Size	BOLT Torque
3/4 thru 1-1/2"	35 Ft. Lbs.
2" thru 48"	75 Ft. Lbs.

WARNING

Style 31 Line Caps **MUST NOT** be used under pressure without anchorage or blocking sufficient to withstand the entire longitudinal thrust due to internal pressure. Failure to do so could allow line cap to blow off the line, causing serious injury or death. Also, escaping line content could cause property damage, serious injury or death!



Dresser™ Pipeline Solutions
41 Fisher Avenue
Bradford, PA 16701
P: 814.362.9200
F: 814.362.9344
www.dresserngs.com

© 2018 Natural Gas Solutions North America, LLC. The Dresser Logo and all Trademarks containing the term "Dresser" are the property of Dresser, LLC, a subsidiary of Baker Hughes, a GE Company.

Part No. 0001-0736-999
10.2018